

For Research Use Only

# SALL2 Polyclonal antibody

Catalog Number: 23114-1-AP



## Basic Information

<b>Catalog Number:</b> 23114-1-AP	<b>GenBank Accession Number:</b> BC136528	<b>Purification Method:</b> Antigen Affinity purified
<b>Size:</b> 1000 µg/ml	<b>GeneID (NCBI):</b> 6297	<b>Recommended Dilutions:</b> WB 1:500-1:2000
<b>Source:</b> Rabbit	<b>UNIPROT ID:</b> Q9Y467	
<b>Isotype:</b> IgG	<b>Full Name:</b> sal-like 2 (Drosophila)	
<b>Immunogen Catalog Number:</b> AG19427	<b>Calculated MW:</b> 1007 aa, 105 kDa	
	<b>Observed MW:</b> 130 kDa	

## Applications

<b>Tested Applications:</b> WB, ELISA	<b>Positive Controls:</b> WB : Jurkat cells, HEK-293 cells
<b>Species Specificity:</b> human	

## Background Information

Sall2 (SALL2, sal-like 2, HSAL2, p150(Sal2)) are mammalian homologs of the Drosophila region-specific home-otic gene spalt (sal), which encodes a zinc finger-containing transcription regulator. Mammalian Sall1 may mediate higher order chromatin structure and may be a component of a distinct heterochromatin-dependent silencing process. Sall2 is a p53-independent regulator of p21 and BAX, and can function in some cell types as a regulator of cell growth and survival. Human Sall2 is present in brain, heart, kidney and pancreas. This antibody is specific to the SALL2 protein.

## Storage

**Storage:**  
Store at -20°C. Stable for one year after shipment.  
**Storage Buffer:**  
PBS with 0.02% sodium azide and 50% glycerol pH 7.3.  
Aliquoting is unnecessary for -20°C storage

For technical support and original validation data for this product please contact:

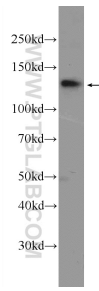
T: 4006900926

E: [Proteintech-CN@ptglab.com](mailto:Proteintech-CN@ptglab.com)

W: [ptgcn.com](http://ptgcn.com)

**This product is exclusively available under Proteintech Group brand and is not available to purchase from any other manufacturer.**

## Selected Validation Data



Jurkat cells were subjected to SDS PAGE followed by western blot with 23114-1-AP (SALL2 Antibody) at dilution of 1:1000 incubated at room temperature for 1.5 hours.