

For Research Use Only

IL-4/1 Polyclonal antibody

Catalog Number: 23048-1-AP

1 Publications



Basic Information

Catalog Number:

23048-1-AP

Concentration:

1000 ug/ml

Source:

Rabbit

Isotype:

IgG

Immunogen Catalog Number:

AG19136

GenBank Accession Number:

BC131625

GeneID (NCBI):

259307

UNIPROT ID:

Q96RQ9

Full Name:

interleukin 4 induced 1

Calculated MW:

567 aa, 63 kDa

Observed MW:

70 kDa

Purification Method:

Antigen affinity purification

Recommended Dilutions:

WB 1:500-1:2000

IF/ICC 1:200-1:800

Applications

Tested Applications:

WB, IF/ICC, ELISA

Cited Applications:

IF

Species Specificity:

human, mouse

Cited Species:

human

Positive Controls:

WB : HeLa cells, Jurkat cells, mouse liver tissue

IF/ICC : HeLa cells,

Background Information

Interleukin-4 Induced Gene 1 (IL4/1) is a secreted L-phenylalanine oxidase mainly produced by inflammatory antigen-presenting cells-in particular, macrophages present in T helper type 1 granulomas and in various types of tumors. In the last decade, it has been shown that IL4/1 is involved in the fine control of B- and T-cell adaptive immune responses. Preclinical models have revealed its role in cancer immune evasion. Recent clinical data highlight IL4/1 as a new potential prognostic marker in human melanoma. As a secreted enzyme, IL4/1 may represent an easily targetable molecule for cancer immunotherapy. IL4/1 protein has an estimated molecular weight of 75 kDa. (PMID: 31330829, PMID: 21469114)

Notable Publications

Author	Pubmed ID	Journal	Application
Shenghua Liu	39702554	Commun Biol	IF

Storage

Storage:

Store at -20°C. Stable for one year after shipment.

Storage Buffer:

PBS with 0.02% sodium azide and 50% glycerol pH 7.3.

Aliquoting is unnecessary for -20°C storage

For technical support and original validation data for this product please contact:

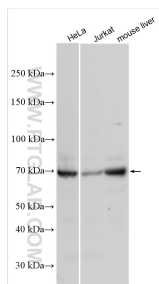
T: 4006900926

E: Proteintech-CN@ptglab.com

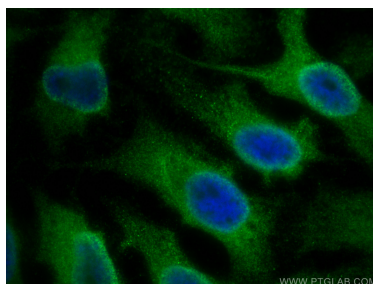
W: ptgcn.com

This product is exclusively available under Proteintech Group brand and is not available to purchase from any other manufacturer.

Selected Validation Data



Various lysates were subjected to SDS PAGE followed by western blot with 23048-1-AP (IL-4I1 antibody) at dilution of 1:1000 incubated at room temperature for 1.5 hours.



Immunofluorescent analysis of (-20°C Ethanol) fixed HeLa cells using IL-4I1 antibody (23048-1-AP) at dilution of 1:400 and Multi-rAb Coralite® Plus 488-Goat Anti-Rabbit Recombinant Secondary Antibody (H+L) (RGAR002).