

# PGLYRP2 Polyclonal antibody

Catalog Number: 23029-1-AP

## Basic Information

**Catalog Number:**

23029-1-AP

**Size:**

300 µg/ml

**Source:**

Rabbit

**Isotype:**

IgG

**Immunogen Catalog Number:**

AG19336

**GenBank Accession Number:**

BC136551

**GeneID (NCBI):**

114770

**UNIPROT ID:**

Q96PD5

**Full Name:**

peptidoglycan recognition protein 2

**Calculated MW:**

576 aa, 62 kDa

**Observed MW:**

68 kDa

**Purification Method:**

Antigen Affinity purified

**Recommended Dilutions:**

WB 1:500-1:2000

IP 0.5-4.0 µg for 1.0-3.0 mg of total protein lysate

IHC 1:20-1:200

## Applications

**Tested Applications:**

IHC, IP, WB, ELISA

**Species Specificity:**

human

**Note-IHC: suggested antigen retrieval with TE buffer pH 9.0; (\*) Alternatively, antigen retrieval may be performed with citrate buffer pH 6.0**

**Positive Controls:**

WB : human plasma tissue,

IP : human plasma tissue,

IHC : human liver cancer tissue,

## Background Information

Peptidoglycan recognition protein 2 (PGLYRP2) is an N-acetylmuramoyl-L-alanine amidase that hydrolyzes peptidoglycan, a ubiquitous component of bacterial cell walls (PMID: 14506276). It is involved in innate immunity. PGLYRP2 is primarily expressed in liver and secreted into blood (PMID: 11461926). The apparent molecular mass measured by SDS-PAGE is larger than calculated mass of 62 kDa, which is likely due to N-glycosylation (PMID: 16054449).

## Storage

**Storage:**

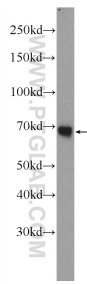
Store at -20°C. Stable for one year after shipment.

**Storage Buffer:**

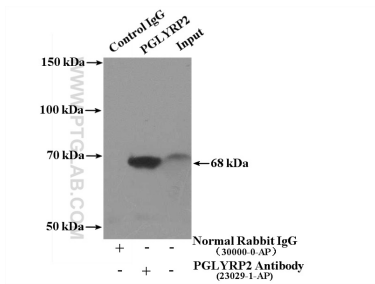
PBS with 0.02% sodium azide and 50% glycerol pH 7.3.

Aliquoting is unnecessary for -20°C storage

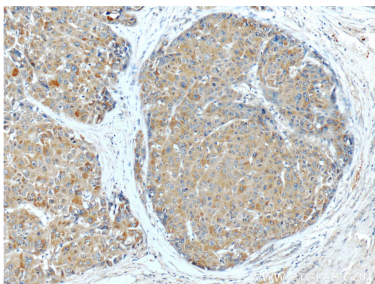
Selected Validation Data



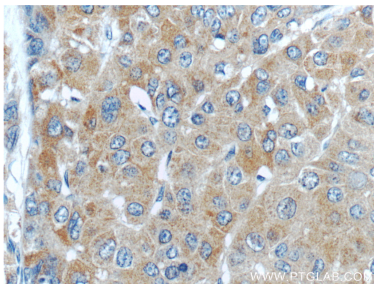
human plasma were subjected to SDS PAGE followed by western blot with 23029-1-AP (PGLYRP2 Antibody) at dilution of 1:1000 incubated at room temperature for 1.5 hours.



IP result of anti-PGLYRP2 (IP:23029-1-AP, 4ug; Detection:23029-1-AP 1:1000) with human plasma lysate 4000ug.



Immunohistochemical analysis of paraffin-embedded human liver cancer tissue slide using 23029-1-AP (PGLYRP2 Antibody) at dilution of 1:50 (under 10x lens).



Immunohistochemical analysis of paraffin-embedded human liver cancer tissue slide using 23029-1-AP (PGLYRP2 Antibody) at dilution of 1:50 (under 40x lens).