

For Research Use Only

# SORCS1 Polyclonal antibody

Catalog Number: 23002-1-AP

1 Publications



## Basic Information

Catalog Number:

23002-1-AP

Concentration:

600 ug/ml

Source:

Rabbit

Isotype:

IgG

Immunogen Catalog Number:

AG19199

GenBank Accession Number:

BC131597

GeneID (NCBI):

114815

UNIPROT ID:

Q8WY21

Full Name:

sortilin-related VPS10 domain  
containing receptor 1

Calculated MW:

1168 aa, 130 kDa

Purification Method:

Antigen Affinity purified

Recommended Dilutions:

WB 1:1000-1:6000

IHC 1:20-1:200

## Applications

Tested Applications:

WB, IHC, ELISA

Cited Applications:

WB

Species Specificity:

human, mouse

Cited Species:

human

Positive Controls:

WB : HEK-293 cells, Y79 cells

IHC : human brain tissue,

**Note-IHC: suggested antigen retrieval with  
TE buffer pH 9.0; (\*) Alternatively, antigen  
retrieval may be performed with citrate  
buffer pH 6.0**

## Background Information

SORCS1, also named as SorCS, belongs to the family of VPS10 domain-containing receptors. SorCS1 immunoreactivity is widespread in a population of neurons throughout the brain. Two different types of cellular localization were observed. Most SorCS1 immunoreactive neurons exhibit a punctate cytoplasmic staining which extends into the dendrites, whilst occasionally SorCS1 neuronal immunoreactivity is associated with the plasma membrane. The predicted molecular weight (MW) of SORCS1 is 130 kDa, and the 60-80 kDa bands observed may represent degradation products.

## Notable Publications

| Author    | Pubmed ID | Journal           | Application |
|-----------|-----------|-------------------|-------------|
| Junfen Xu | 34326275  | Aging (Albany NY) | WB          |

## Storage

Storage:

Store at -20°C. Stable for one year after shipment.

Storage Buffer:

PBS with 0.02% sodium azide and 50% glycerol, pH7.3

Aliquoting is unnecessary for -20°C storage

For technical support and original validation data for this product please contact:

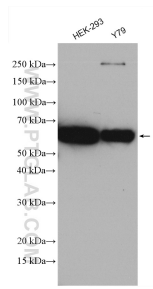
T: 4006900926

E: [Proteintech-CN@ptglab.com](mailto:Proteintech-CN@ptglab.com)

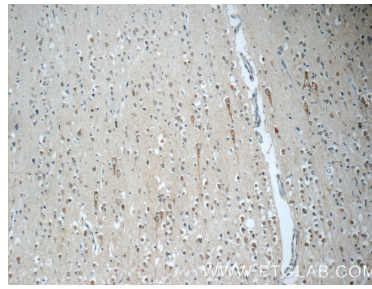
W: [ptgcn.com](http://ptgcn.com)

This product is exclusively available under Proteintech Group brand and is not available to purchase from any other manufacturer.

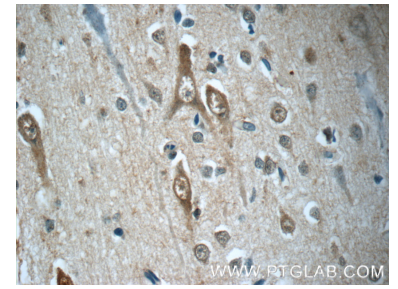
## Selected Validation Data



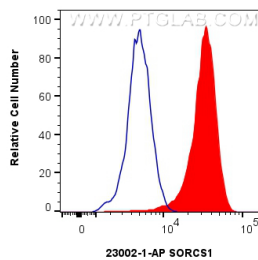
Various lysates were subjected to SDS PAGE followed by western blot with 23002-1-AP (SORCS1 antibody) at dilution of 1:3000 incubated at room temperature for 1.5 hours.



Immunohistochemical analysis of paraffin-embedded human brain tissue slide using 23002-1-AP (SORCS1 Antibody) at dilution of 1:50 (under 10x lens).



Immunohistochemical analysis of paraffin-embedded human brain tissue slide using 23002-1-AP (SORCS1 Antibody) at dilution of 1:50 (under 40x lens).



$1 \times 10^6$  HeLa cells were intracellularly stained with 0.25 ug SORCS1 Polyclonal antibody (23002-1-AP) and CoraLite®488-Conjugated Goat Anti-Rabbit IgG(H+L) (SA00013-2)(red), or 0.25 ug Rabbit IgG control Rabbit PolyAb (30000-0-AP) (blue). Cells were fixed with 4% PFA and permeabilized with Flow Cytometry Perm Buffer (PF00011-C).