

For Research Use Only

# GBP6 Polyclonal antibody

Catalog Number: 23001-1-AP

2 Publications



## Basic Information

Catalog Number:

23001-1-AP

Size:

900 ug/ml

Source:

Rabbit

Isotype:

IgG

Immunogen Catalog Number:

AG19196

GenBank Accession Number:

BC131713

GeneID (NCBI):

163351

UNIPROT ID:

Q6ZN66

Full Name:

guanylate binding protein family, member 6

Calculated MW:

633 aa, 72 kDa

Observed MW:

70 kDa

Purification Method:

Antigen Affinity purified

Recommended Dilutions:

WB 1:1000-1:5000

IHC 1:20-1:200

## Applications

Tested Applications:

WB, IHC, ELISA

Cited Applications:

WB

Species Specificity:

human

Cited Species:

human

**Note-IHC: suggested antigen retrieval with TE buffer pH 9.0; (\*) Alternatively, antigen retrieval may be performed with citrate buffer pH 6.0**

Positive Controls:

WB : HeLa cells, MCF-7 cells

IHC : human testis tissue, human lung cancer tissue

## Background Information

Guanylate-binding protein 6 (GBP6) is a member of the guanylate-binding protein family and is best known as a gene induced by interferon- $\gamma$  signalling. Interferon- $\gamma$  is produced predominantly by NK and T-cells, indicating that GBP6 is involved in host immune response (PMID: 28747659, 27029383). GBP6 has 2 isoforms with the molecular mass of 34 and 72 kDa.

## Notable Publications

Author	Pubmed ID	Journal	Application
Kui Xiao	34714841	PLoS One	WB
Pei-Feng Liu	31707626	Clin Oral Investig	WB

## Storage

Storage:

Store at -20°C. Stable for one year after shipment.

Storage Buffer:

PBS with 0.02% sodium azide and 50% glycerol pH 7.3.

Aliquoting is unnecessary for -20°C storage

For technical support and original validation data for this product please contact:

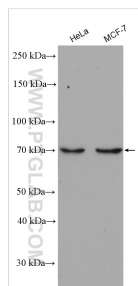
T: 4006900926

E: Proteintech-CN@ptglab.com

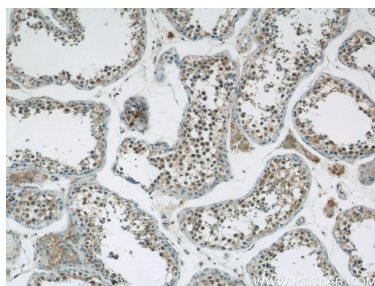
W: ptgcn.com

This product is exclusively available under Proteintech Group brand and is not available to purchase from any other manufacturer.

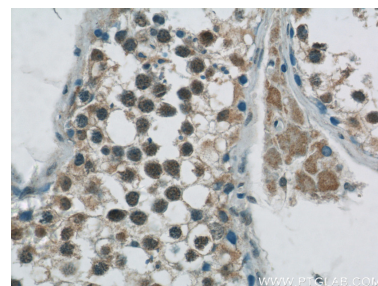
## Selected Validation Data



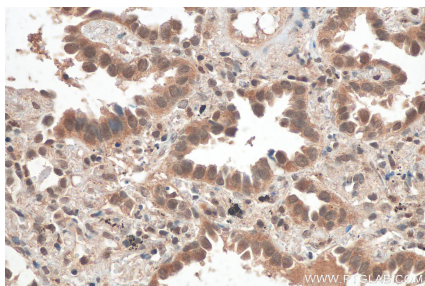
HeLa cells were subjected to SDS PAGE followed by western blot with 23001-1-AP (GBP6 antibody) at dilution of 1:2500 incubated at room temperature for 1.5 hours.



Immunohistochemical analysis of paraffin-embedded human testis tissue slide using 23001-1-AP (GBP6 Antibody) at dilution of 1:50 (under 10x lens).



Immunohistochemical analysis of paraffin-embedded human testis tissue slide using 23001-1-AP (GBP6 Antibody) at dilution of 1:50 (under 40x lens).



Immunohistochemical analysis of paraffin-embedded human lung cancer tissue slide using 23001-1-AP (GBP6 antibody) at dilution of 1:200 (under 40x lens). Heat mediated antigen retrieval with Tris-EDTA buffer (pH 9.0).