

MEX3C Polyclonal antibody

Catalog Number: 22882-1-AP

2 Publications

Basic Information

Catalog Number:

22882-1-AP

Size:

350 µg/ml

Source:

Rabbit

Isotype:

IgG

Immunogen Catalog Number:

AG18931

GenBank Accession Number:

BC148855

GeneID (NCBI):

51320

UNIPROT ID:

Q5U5Q3

Full Name:

mex-3 homolog C (C. elegans)

Calculated MW:

659 aa, 69 kDa

Observed MW:

69 kDa

Purification Method:

Antigen affinity purification

Recommended Dilutions:

WB 1:500-1:2000

IHC 1:20-1:200

IF/ICC 1:50-1:500

Applications

Tested Applications:

WB, IHC, IF/ICC, ELISA

Cited Applications:

WB, IHC, IF

Species Specificity:

human, mouse, rat

Cited Species:

human, mouse

Note-IHC: suggested antigen retrieval with TE buffer pH 9.0; (*) Alternatively, antigen retrieval may be performed with citrate buffer pH 6.0

Positive Controls:

WB : HeLa cells, PC-3 cells

IHC : human testis tissue,

IF/ICC : HeLa cells,

Background Information

MEX3C(RNA-binding E3 ubiquitin-protein ligase MEX3C) is also named as RKHD2, RNF194 and may be involved in post-transcriptional regulatory mechanisms. MEX3C is necessary for normal postnatal growth and enhances the expression of local bone lgf1 expression(PMID:22927639). This protein is expressed in the cytoplasm and shuttles between the cytoplasm and the nucleus through the CRM1 export pathway. At least three MEX3C protein variants can be expressed by alternative splicing and alternative transcription initiation: MEX3C 659AA(containing 659 amino acid residues, about 82 kDa), MEX3C 464AA(about 64 kDa) and MEX3C 372AA(about 50 kDa)(PMID: 28982131, 27053362, 22863774).

Notable Publications

Author	Pubmed ID	Journal	Application
Adam M Zahm	31759059	Gastroenterology	IHC
Xue Li	27053362	Biol Reprod	WB,IF

Storage

Storage:

Store at -20°C. Stable for one year after shipment.

Storage Buffer:

PBS with 0.02% sodium azide and 50% glycerol pH 7.3.

Aliquoting is unnecessary for -20°C storage

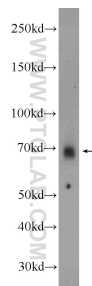
For technical support and original validation data for this product please contact:

T: 4006900926

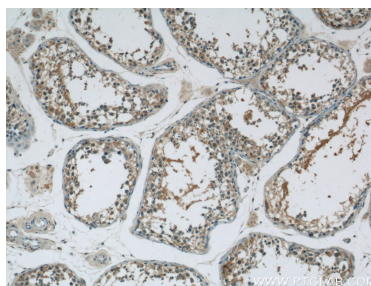
E: Proteintech-CN@ptglab.comW: ptgcn.com

This product is exclusively available under Proteintech Group brand and is not available to purchase from any other manufacturer.

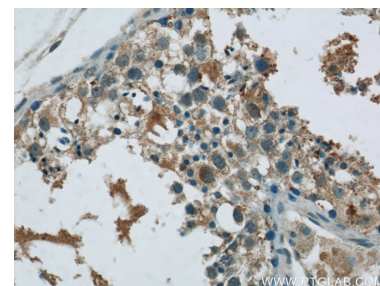
Selected Validation Data



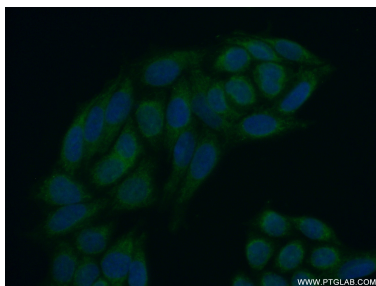
HeLa cells were subjected to SDS PAGE followed by western blot with 22882-1-AP (MEX3C antibody) at dilution of 1:1000 incubated at room temperature for 1.5 hours.



Immunohistochemical analysis of paraffin-embedded human testis tissue slide using 22882-1-AP (MEX3C Antibody) at dilution of 1:50 (under 10x lens).



Immunohistochemical analysis of paraffin-embedded human testis tissue slide using 22882-1-AP (MEX3C Antibody) at dilution of 1:50 (under 40x lens).



Immunofluorescent analysis of (10% Formaldehyde) fixed HeLa cells using 22882-1-AP (MEX3C antibody) at dilution of 1:50 and Alexa Fluor 488-conjugated AffiniPure Goat Anti-Rabbit IgG(H+L).