

IL-22RA2 Polyclonal antibody

Catalog Number: 22861-1-AP

Basic Information

Catalog Number: 22861-1-AP	GenBank Accession Number: BC125167	Purification Method: Antigen affinity purification
Size: 500 µg/ml	GeneID (NCBI): 116379	Recommended Dilutions: WB 1:500-1:1000 IHC 1:50-1:500
Source: Rabbit	UNIPROT ID: Q969J5	
Isotype: IgG	Full Name: interleukin 22 receptor, alpha 2	
Immunogen Catalog Number: AG18854	Calculated MW: 263 aa, 31 kDa	
	Observed MW: 27 kDa	

Applications

Tested Applications:
FC, IHC, WB, ELISA

Species Specificity:
human

Note-IHC: suggested antigen retrieval with TE buffer pH 9.0; (*) Alternatively, antigen retrieval may be performed with citrate buffer pH 6.0

Positive Controls:

WB : MDA-MB-453s cells,

IHC : human lung cancer tissue, human breast cancer tissue

Background Information

Interleukin-22 receptor subunit alpha-2 (IL22RA2, also known as CRF2-10) is a soluble member of the type II cytokine receptor family. Through binding to IL22, IL22RA2 prevents the interaction of IL22 with the functional IL22-R complex and blocks the activity of IL22 (in vitro). IL22RA2 may play an important role as an IL22 antagonist in the regulation of inflammatory responses. It has been described that human IL22RA2 gene encodes three alternatively spliced isoforms called CRF2-10L, CRF2-10, and CRF2-10s, with molecular weights of 31 kDa, 27 kDa, and 15 kDa, respectively.

Storage

Storage:

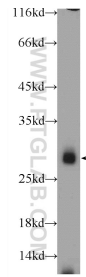
Store at -20°C. Stable for one year after shipment.

Storage Buffer:

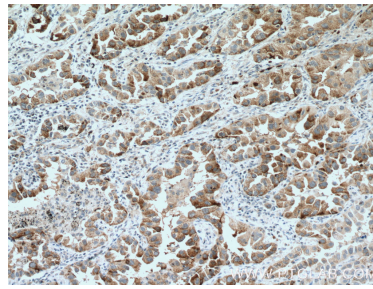
PBS with 0.02% sodium azide and 50% glycerol pH 7.3.

Aliquoting is unnecessary for -20°C storage

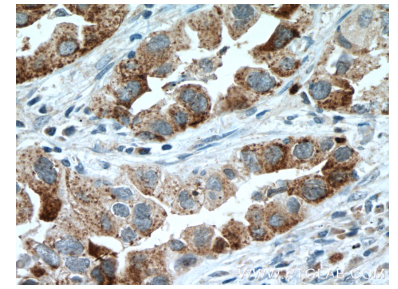
Selected Validation Data



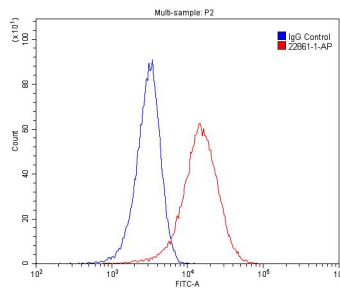
MDA-MB-453s cells were subjected to SDS PAGE followed by western blot with 22861-1-AP (IL22RA2 Antibody) at dilution of 1:600 incubated at room temperature for 1.5 hours.



Immunohistochemical analysis of paraffin-embedded human lung cancer tissue slide using 22861-1-AP (IL22RA2 antibody) at dilution of 1:200 (under 10x lens. Heat mediated antigen retrieval with Tris-EDTA buffer (pH 9.0).



Immunohistochemical analysis of paraffin-embedded human lung cancer tissue slide using 22861-1-AP (IL22RA2 antibody) at dilution of 1:200 (under 40x lens. Heat mediated antigen retrieval with Tris-EDTA buffer (pH 9.0).



1X10⁶ HeLa cells were stained with 0.2ug IL22RA2 antibody (22861-1-AP, red) and control antibody (blue). Alexa Fluor 488-conjugated AffiniPure Goat Anti-Rabbit IgG(H+L) with dilution 1:1500. Cells were fixed with 4% PFA and permeabilized with 0.1% Triton X-100.