

For Research Use Only

OFD1 Polyclonal antibody, PBS Only

Catalog Number: 22851-1-PBS



Basic Information

Catalog Number: 22851-1-PBS	GenBank Accession Number: BC096344	Purification Method: Antigen affinity purification
Concentration: 1 mg/ml	GeneID (NCBI): 8481	
Source: Rabbit	UNIPROT ID: O75665	
Isotype: IgG	Full Name: oral-facial-digital syndrome 1	
Immunogen Catalog Number: AG18898	Calculated MW: 1012 aa, 117 kDa	
	Observed MW: 110-120 kDa	

Applications

Tested Applications:
IHC, IF/ICC, Indirect ELISA

Species Specificity:
human

Background Information

OFD1, also named CXorf5 and 71-7A, belongs to the OFD1 family. It has been implicated in several developmental syndromes, including a male-lethal X-linked dominant condition, Oral-Facial-Digital type 1 (OFD1) syndrome, X-linked recessive Simpson-Golabi-Behmel syndrome type 2 (SGBS2), and Joubert syndrome and related disorders (JSRDs). It is a component of the centrioles controlling mother and daughter centrioles' length. It recruits to the centriole IFT88 and centriole distal appendage-specific proteins including CEP164. Involved in the biogenesis of the cilium, a centriole-associated function. OFD1 plays an important role in development by regulating Wnt signaling and the specification of the left-right axis. This antibody recognizes all the isoforms of OFD1. The 43 kDa is isoform 2. The ~80 kDa band is unknown.

Storage

Storage:
Store at -80°C.
The product is shipped with ice packs. Upon receipt, store it immediately at -80°C

Storage Buffer:
PBS Only

For technical support and original validation data for this product please contact:

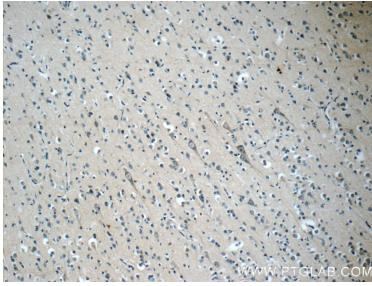
T: 4006900926

E: Proteintech-CN@ptglab.com

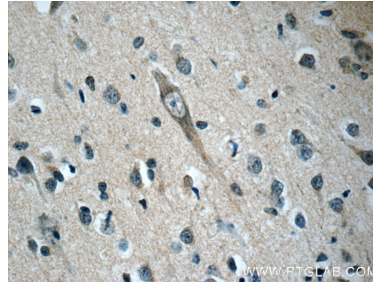
W: ptgcn.com

This product is exclusively available under Proteintech Group brand and is not available to purchase from any other manufacturer.

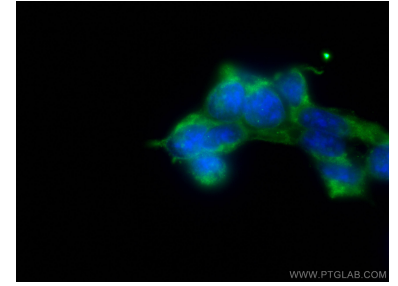
Selected Validation Data



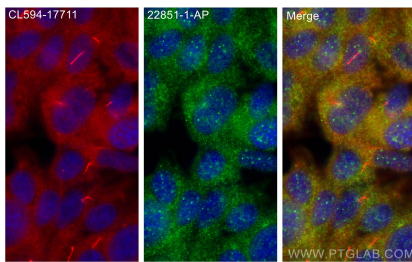
Immunohistochemical analysis of paraffin-embedded human brain slide using 22851-1-AP (OFD1 Antibody) at dilution of 1:50. (under 10x lens). This data was developed using the same antibody clone with 22851-1-PBS in a different storage buffer formulation.



Immunohistochemical analysis of paraffin-embedded human brain slide using 22851-1-AP (OFD1 Antibody) at dilution of 1:50. (under 40x lens). This data was developed using the same antibody clone with 22851-1-PBS in a different storage buffer formulation.



Immunofluorescent analysis of (-20°C Ethanol) fixed HEK-293 cells using OFD1 antibody (22851-1-AP) at dilution of 1:200 and CoraLite@488-Conjugated AffiniPure Goat Anti-Rabbit IgG(H+L). This data was developed using the same antibody clone with 22851-1-PBS in a different storage buffer formulation.



Immunofluorescent analysis of (-20°C Methanol) fixed hTERT-RPE1 cells using OFD1 antibody (22851-1-AP) at dilution of 1:400 and CoraLite@488-Conjugated AffiniPure Goat Anti-Rabbit IgG(H+L) (SA00013-2), CoraLite@594 ARL13B antibody (CL594-17711, red). This data was developed using the same antibody clone with 22851-1-PBS in a different storage buffer formulation.