

For Research Use Only

OFD1 Polyclonal antibody

Catalog Number: 22851-1-AP

7 Publications



Basic Information

| | | |
|---|---|--|
| Catalog Number: 22851-1-AP | GenBank Accession Number: BC096344 | Purification Method: Antigen affinity purification |
| Concentration: 450 ug/ml | GeneID (NCBI): 8481 | Recommended Dilutions: IHC 1:20-1:200 |
| Source: Rabbit | UNIPROT ID: O75665 | IF/ICC 1:50-1:500 |
| Isotype: IgG | Full Name: oral-facial-digital syndrome 1 | |
| Immunogen Catalog Number: AG18898 | Calculated MW: 1012 aa, 117 kDa | |
| | Observed MW: 110-120 kDa | |

Applications

| | |
|--|---|
| Tested Applications: IHC, IF/ICC, ELISA | Positive Controls: |
| Cited Applications: WB, IF | IHC : human brain tissue, |
| Species Specificity: human | IF/ICC : HEK-293 cells, hTERT-RPE1 cells |
| Cited Species: human, mouse, rat, zebrafish | |
| Note-IHC: suggested antigen retrieval with TE buffer pH 9.0; (*) Alternatively, antigen retrieval may be performed with citrate buffer pH 6.0 | |

Background Information

OFD1, also named CXorf5 and 71-7A, belongs to the OFD1 family. It has been implicated in several developmental syndromes, including a male-lethal X-linked dominant condition, Oral-Facial-Digital type 1 (OFD1) syndrome, X-linked recessive Simpson-Golabi-Behmel syndrome type 2 (SGBS2), and Joubert syndrome and related disorders (JSRDs). It is a component of the centrioles controlling mother and daughter centrioles' length. It recruits to the centriole IFT88 and centriole distal appendage-specific proteins including CEP164. Involved in the biogenesis of the cilium, a centriole-associated function. OFD1 plays an important role in development by regulating Wnt signaling and the specification of the left-right axis. This antibody recognizes all the isoforms of OFD1. The 43 kDa is isoform 2. The ~80 kDa band is unknown.

Notable Publications

| Author | Pubmed ID | Journal | Application |
|--------------------|-----------|----------------------------|-------------|
| Dragomir B Krastev | 29789535 | Nat Commun | IF |
| Ryuji Kojima | 35720483 | Oncol Lett | WB, IF |
| Ji Hyun Shin | 25796328 | Biochem Biophys Res Commun | WB |

Storage

Storage:
Store at -20°C. Stable for one year after shipment.
Storage Buffer:
PBS with 0.02% sodium azide and 50% glycerol pH 7.3.
Aliquoting is unnecessary for -20°C storage

For technical support and original validation data for this product please contact:

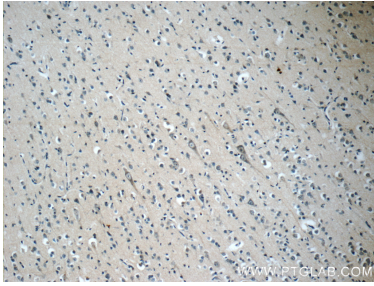
T: 4006900926

E: Proteintech-CN@ptglab.com

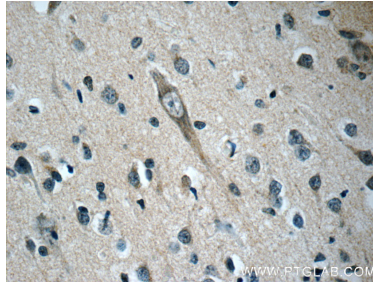
W: ptgcn.com

This product is exclusively available under Proteintech Group brand and is not available to purchase from any other manufacturer.

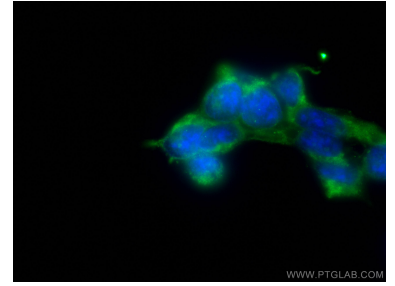
Selected Validation Data



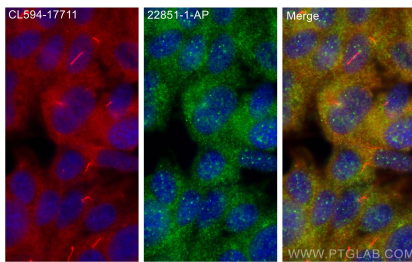
Immunohistochemical analysis of paraffin-embedded human brain slide using 22851-1-AP (OFD1 Antibody) at dilution of 1:50. (under 10x lens).



Immunohistochemical analysis of paraffin-embedded human brain slide using 22851-1-AP (OFD1 Antibody) at dilution of 1:50. (under 40x lens).



Immunofluorescent analysis of (-20°C Ethanol) fixed HEK-293 cells using OFD1 antibody (22851-1-AP) at dilution of 1:200 and CoraLite®488-Conjugated AffiniPure Goat Anti-Rabbit IgG(H+L).



Immunofluorescent analysis of (-20°C Methanol) fixed hTERT-RPE1 cells using OFD1 antibody (22851-1-AP) at dilution of 1:400 and CoraLite®488-Conjugated AffiniPure Goat Anti-Rabbit IgG(H+L) (SA00013-2), CoraLite®594 ARL13B antibody (CL594-17711, red).