

For Research Use Only

SARDH Polyclonal antibody

Catalog Number: 22762-1-AP

4 Publications



Basic Information

Catalog Number:

22762-1-AP

Size:

260 µg/ml

Source:

Rabbit

Isotype:

IgG

Immunogen Catalog Number:

AG18738

GenBank Accession Number:

BC136364

GeneID (NCBI):

1757

UNIPROT ID:

Q9UL12

Full Name:

sarcosine dehydrogenase

Calculated MW:

918 aa, 101 kDa

Observed MW:

100 kDa

Purification Method:

Antigen affinity purification

Recommended Dilutions:

WB 1:1000-1:4000

IHC 1:50-1:500

Applications

Tested Applications:

IHC, WB, ELISA

Cited Applications:

WB, IHC

Species Specificity:

human, rat, mouse

Cited Species:

human, rat, mouse

Note-IHC: suggested antigen retrieval with TE buffer pH 9.0; (*) Alternatively, antigen retrieval may be performed with citrate buffer pH 6.0

Positive Controls:

WB : mouse liver tissue, rat liver tissue

IHC : human liver cancer tissue,

Background Information

Notable Publications

Author	Pubmed ID	Journal	Application
Long Miao	38877335	Cell Biochem Biophys	WB
Haixiang Xie	38164283	J Cancer	IHC
Fadzai Teramayi	38128812	Brain Res	WB

Storage

Storage:

Store at -20°C. Stable for one year after shipment.

Storage Buffer:

PBS with 0.02% sodium azide and 50% glycerol pH 7.3.

Aliquoting is unnecessary for -20°C storage

For technical support and original validation data for this product please contact:

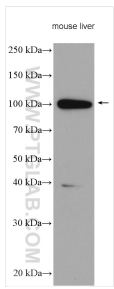
T: 4006900926

E: Proteintech-CN@ptglab.com

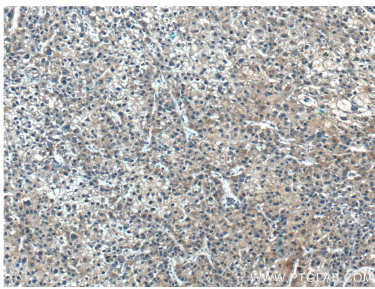
W: ptgcn.com

This product is exclusively available under Proteintech Group brand and is not available to purchase from any other manufacturer.

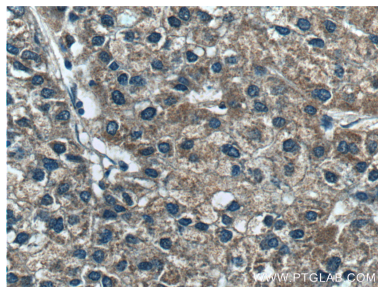
Selected Validation Data



mouse liver tissue were subjected to SDS PAGE followed by western blot with 22762-1-AP (SARDH antibody) at dilution of 1:2000 incubated at room temperature for 1.5 hours.



Immunohistochemical analysis of paraffin-embedded human liver cancer tissue slide using 22762-1-AP (SARDH Antibody) at dilution of 1:100 (under 10x lens).



Immunohistochemical analysis of paraffin-embedded human liver cancer tissue slide using 22762-1-AP (SARDH Antibody) at dilution of 1:100 (under 40x lens).