

KDM5D Polyclonal antibody

Catalog Number: 22739-1-AP

3 Publications

Basic Information

Catalog Number:

22739-1-AP

Size:

850 µg/ml

Source:

Rabbit

Isotype:

IgG

Immunogen Catalog Number:

AG18690

GenBank Accession Number:

BC146767

GeneID (NCBI):

8284

UNIPROT ID:

Q9BY66

Full Name:

lysine (K)-specific demethylase 5D

Calculated MW:

1482 aa, 167 kDa

Observed MW:

70 kDa, 175 kDa

Purification Method:

Antigen affinity purification

Recommended Dilutions:

WB 1:500-1:3000

Applications

Tested Applications:

WB, ELISA

Cited Applications:

WB, IHC

Species Specificity:

human

Cited Species:

human

Positive Controls:

WB : TF-1 cells, Jurkat cells

Background Information

Notable Publications

| Author | Pubmed ID | Journal | Application |
|---------------|-----------|--------------------|-------------|
| Shi-Ting Li | 32694775 | Nat Metab | WB |
| Wenxia Xu | 29989047 | Int J Biol Sci | WB |
| Georg Schäfer | 34804837 | Transl Androl Urol | IHC |

Storage

Storage:

Store at -20°C. Stable for one year after shipment.

Storage Buffer:

PBS with 0.02% sodium azide and 50% glycerol pH 7.3.

Aliquoting is unnecessary for -20°C storage

For technical support and original validation data for this product please contact:

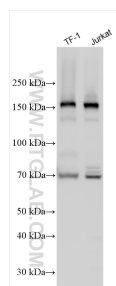
T: 4006900926

E: Proteintech-CN@ptglab.com

W: ptgcn.com

This product is exclusively available under Proteintech Group brand and is not available to purchase from any other manufacturer.

Selected Validation Data



Various lysates were subjected to SDS PAGE followed by western blot with 22739-1-AP (KDM5D antibody) at dilution of 1:1500 incubated at room temperature for 1.5 hours.