

For Research Use Only

WHSC1 Polyclonal antibody

Catalog Number: 22722-1-AP

1 Publications



Basic Information

Catalog Number:

22722-1-AP

Size:

350 µg/ml

Source:

Rabbit

Isotype:

IgG

Immunogen Catalog Number:

AG18611

GenBank Accession Number:

BC152412

GeneID (NCBI):

7468

UNIPROT ID:

O96028

Full Name:

Wolf-Hirschhorn syndrome candidate

1

Calculated MW:

162 kDa

Observed MW:

70 kDa, 150 kDa

Purification Method:

Antigen Affinity purified

Recommended Dilutions:

WB 1:500-1:2000

IP 0.5-4.0 µg for 1.0-3.0 mg of total protein lysate

IHC 1:50-1:500

Applications

Tested Applications:

IHC, IP, WB, ELISA

Cited Applications:

WB

Species Specificity:

human

Cited Species:

human

Positive Controls:

WB : HCT 116 cells,

IP : HeLa cells,

IHC : human breast cancer tissue,

Note-IHC: suggested antigen retrieval with TE buffer pH 9.0; (*) Alternatively, antigen retrieval may be performed with citrate buffer pH 6.0

Background Information

WHSC1 (also known as MMSET or NSD2) is a SET domain containing histone lysine methyltransferase that can di- and trimethylate histone H3 at lysine 36 (H3K36). WHSC1 mRNA is highly expressed in embryonic tissues, especially those with high degrees of proliferation, whereas in adult tissues, the mRNA is primarily expressed in thymus and testis. WHSC1 is implicated in cellular adhesion, clonogenic growth and tumorigenicity. Its overexpression has been found in various cancers. It undergoes alternative splicing resulting in different protein isoforms. Recently WHSC1 has been identified as a critical epigenetic regulator for Tfh differentiation.

Notable Publications

Author	Pubmed ID	Journal	Application
Guanghui He	38996954	Cell Signal	WB

Storage

Storage:

Store at -20°C. Stable for one year after shipment.

Storage Buffer:

PBS with 0.02% sodium azide and 50% glycerol pH 7.3.

Aliquoting is unnecessary for -20°C storage

For technical support and original validation data for this product please contact:

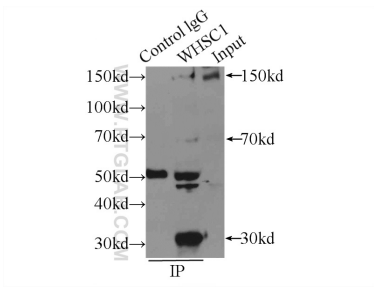
T: 4006900926

E: Proteintech-CN@ptglab.com

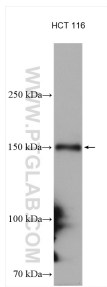
W: ptgcn.com

This product is exclusively available under Proteintech Group brand and is not available to purchase from any other manufacturer.

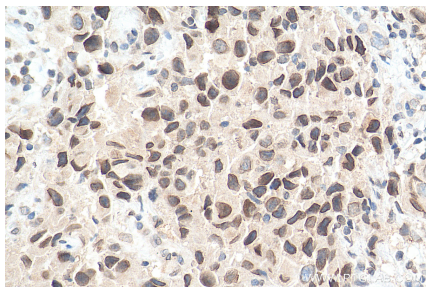
Selected Validation Data



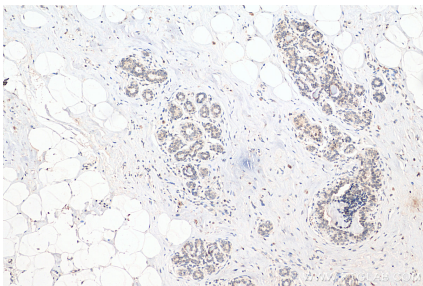
IP result of anti-WHSC1 (IP:22722-1-AP, 3ug; Detection:22722-1-AP 1:300) with HeLa cells lysate 2000ug.



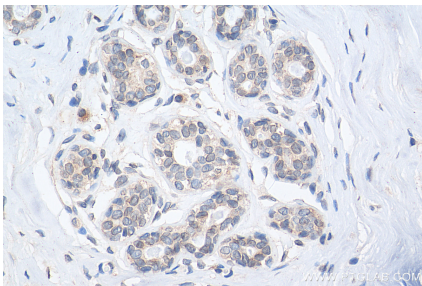
HCT 116 cells were subjected to SDS PAGE followed by western blot with 22722-1-AP (WHSC1 antibody) at dilution of 1:1000 incubated at room temperature for 1.5 hours.



Immunohistochemical analysis of paraffin-embedded human breast cancer tissue slide using 22722-1-AP (WHSC1 antibody) at dilution of 1:200 (under 40x lens). Heat mediated antigen retrieval with Tris-EDTA buffer (pH 9.0).



Immunohistochemical analysis of paraffin-embedded human breast cancer tissue slide using 22722-1-AP (WHSC1 antibody) at dilution of 1:200 (under 10x lens). Heat mediated antigen retrieval with Tris-EDTA buffer (pH 9.0).



Immunohistochemical analysis of paraffin-embedded human breast cancer tissue slide using 22722-1-AP (WHSC1 antibody) at dilution of 1:200 (under 40x lens). Heat mediated antigen retrieval with Tris-EDTA buffer (pH 9.0).