

For Research Use Only

# EML4 Polyclonal antibody

Catalog Number: 22709-1-AP



## Basic Information

**Catalog Number:**

22709-1-AP

**Size:**

700 ug/ml

**Source:**

Rabbit

**Isotype:**

IgG

**Immunogen Catalog Number:**

AG18463

**GenBank Accession Number:**

BC140845

**GeneID (NCBI):**

27436

**UNIPROT ID:**

Q9HC35

**Full Name:**

echinoderm microtubule associated protein like 4

**Calculated MW:**

981 aa, 109 kDa

**Observed MW:**

120 kDa

**Purification Method:**

Antigen Affinity purified

**Recommended Dilutions:**

WB 1:500-1:3000

IP 0.5-4.0 ug for 1.0-3.0 mg of total protein lysate

IHC 1:50-1:500

IF/ICC 1:200-1:800

## Applications

**Tested Applications:**

WB, IHC, IF/ICC, IP, ELISA

**Species Specificity:**

human

**Note-IHC:** suggested antigen retrieval with **TE buffer pH 9.0; (\*) Alternatively, antigen retrieval may be performed with citrate buffer pH 6.0**

**Positive Controls:**

**WB:** A549 cells, A431 cells, HeLa cells

**IP:** A549 cells,

**IHC:** human breast cancer tissue, human prostate cancer tissue, human lung cancer tissue

**IF/ICC:** A549 cells,

## Background Information

### Storage

**Storage:**

Store at -20°C. Stable for one year after shipment.

**Storage Buffer:**

PBS with 0.02% sodium azide and 50% glycerol pH 7.3.

Aliquoting is unnecessary for -20°C storage

For technical support and original validation data for this product please contact:

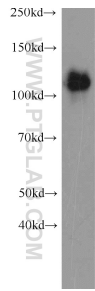
T: 4006900926

E: [Proteintech-CN@ptglab.com](mailto:Proteintech-CN@ptglab.com)

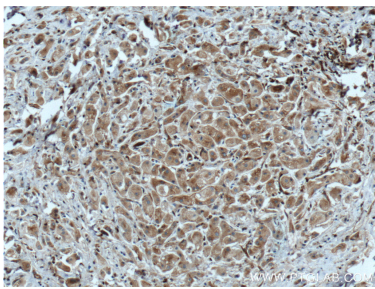
W: [ptgcn.com](http://ptgcn.com)

This product is exclusively available under Proteintech Group brand and is not available to purchase from any other manufacturer.

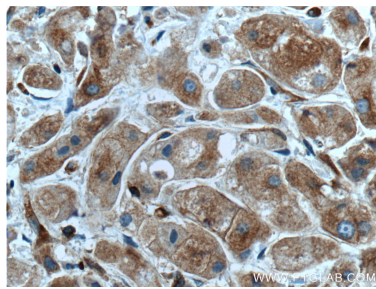
Selected Validation Data



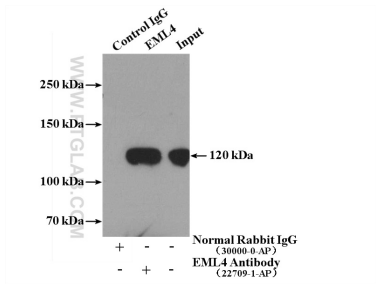
A549 cells were subjected to SDS PAGE followed by western blot with 22709-1-AP (EML4 antibody) at dilution of 1:2000 incubated at room temperature for 1.5 hours.



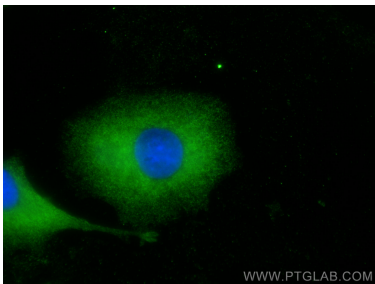
Immunohistochemical analysis of paraffin-embedded human breast cancer tissue slide using 22709-1-AP (EML4 Antibody) at dilution of 1:200 (under 10x lens). Heat mediated antigen retrieval with Tris-EDTA buffer (pH 9.0).



Immunohistochemical analysis of paraffin-embedded human breast cancer tissue slide using 22709-1-AP (EML4 Antibody) at dilution of 1:200 (under 40x lens). Heat mediated antigen retrieval with Tris-EDTA buffer (pH 9.0).



IP result of anti-EML4 (IP:22709-1-AP, 4ug; Detection:22709-1-AP 1:2000) with A549 cells lysate 400ug.



Immunofluorescent analysis of (-20°C Methanol) fixed A549 cells using EML4 antibody (22709-1-AP) at dilution of 1:400 and CoraLite®488-Conjugated AffiniPure Goat Anti-Rabbit IgG(H+L) (SA00013-2).