

For Research Use Only

# BCR Polyclonal antibody

Catalog Number: 22585-1-AP

Featured Product

2 Publications



## Basic Information

### Catalog Number:

22585-1-AP

### Size:

700 ug/ml

### Source:

Rabbit

### Isotype:

IgG

### Immunogen Catalog Number:

AG18281

### GenBank Accession Number:

BC066122

### GeneID (NCBI):

613

### UNIPROT ID:

P11274

### Full Name:

breakpoint cluster region

### Calculated MW:

143 kDa

### Observed MW:

150-160 kDa

### Purification Method:

Antigen Affinity purified

### Recommended Dilutions:

WB 1:500-1:2000

IP 0.5-4.0 ug for 1.0-3.0 mg of total protein lysate

IHC 1:20-1:200

IF/ICC 1:200-1:800

## Applications

### Tested Applications:

WB, IHC, IF/ICC, IP, ELISA

### Cited Applications:

WB, IHC

### Species Specificity:

human, monkey

### Cited Species:

human, mouse

**Note-IHC: suggested antigen retrieval with TE buffer pH 9.0; (\*) Alternatively, antigen retrieval may be performed with citrate buffer pH 6.0**

### Positive Controls:

**WB:** Y79 cells, COS-7 cells, HEK-293 cells, HeLa cells, K-562 cells, MCF-7 cells

**IP:** HEK-293 cells,

**IHC:** human skin tissue,

**IF/ICC:** HeLa cells, HepG2 cells

## Background Information

The Bcr gene, mapping on chromosome 22, was originally identified by its presence in the chimeric Bcr-Abl oncogene. The Bcr gene encodes for the break point cluster region protein (Bcr). Although the BCR-ABL fusion protein has been extensively studied, the function of the normal BCR gene product is not clear. The protein has serine/threonine kinase activity and is a GTPase-activating protein for RAC1 and CDC42. A chromosomal aberration involving BCR has been found in patients with chronic myeloid leukemia.

## Notable Publications

| Author       | Pubmed ID | Journal                  | Application |
|--------------|-----------|--------------------------|-------------|
| Yongtao Xiao | 34190380  | Neurogastroenterol Motil | WB, IHC     |
| Yijia Ren    | 39341811  | Nat Commun               | WB          |

## Storage

### Storage:

Store at -20°C. Stable for one year after shipment.

### Storage Buffer:

PBS with 0.02% sodium azide and 50% glycerol pH 7.3.

Aliquoting is unnecessary for -20°C storage

For technical support and original validation data for this product please contact:

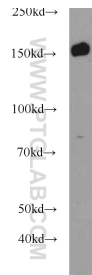
T: 4006900926

E: [Proteintech-CN@ptglab.com](mailto:Proteintech-CN@ptglab.com)

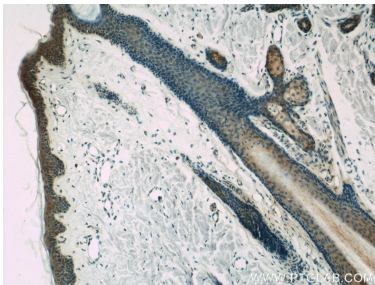
W: [ptgcn.com](http://ptgcn.com)

**This product is exclusively available under Proteintech Group brand and is not available to purchase from any other manufacturer.**

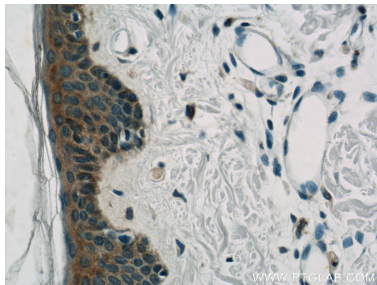
Selected Validation Data



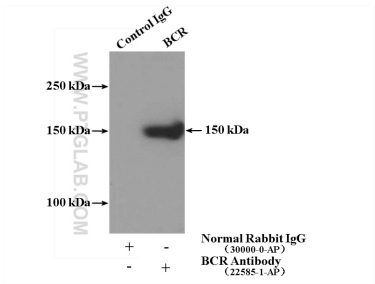
Y79 cells were subjected to SDS PAGE followed by western blot with 22585-1-AP (BCR antibody) at dilution of 1:1000 incubated at room temperature for 1.5 hours.



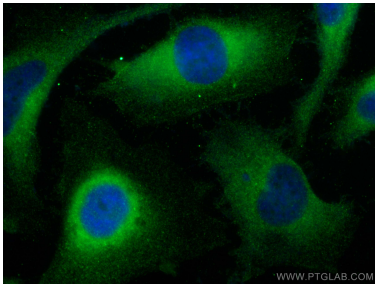
Immunohistochemical analysis of paraffin-embedded human skin slide using 22585-1-AP (BCR Antibody) at dilution of 1:50.



Immunohistochemical analysis of paraffin-embedded human skin slide using 22585-1-AP (BCR Antibody) at dilution of 1:50.



IP result of anti-BCR (IP:22585-1-AP, 4ug; Detection:22585-1-AP 1:1000) with HEK-293 cells lysate 3000ug.



Immunofluorescent analysis of (-20°C Methanol) fixed HeLa cells using BCR antibody (22585-1-AP) at dilution of 1:400 and CoraLite®488-Conjugated AffiniPure Goat Anti-Rabbit IgG(H+L) (SA00013-2).