

For Research Use Only

# RFX6 Polyclonal antibody

Catalog Number: 22551-1-AP **1 Publications**



## Basic Information

<b>Catalog Number:</b> 22551-1-AP	<b>GenBank Accession Number:</b> BC039248	<b>Purification Method:</b> Antigen affinity purification
<b>Size:</b> 800 µg/ml	<b>GeneID (NCBI):</b> 222546	<b>Recommended Dilutions:</b> WB 1:200-1:1000
<b>Source:</b> Rabbit	<b>UNIPROT ID:</b> Q8HWS3	
<b>Isotype:</b> IgG	<b>Full Name:</b> regulatory factor X, 6	
<b>Immunogen Catalog Number:</b> AG18235	<b>Calculated MW:</b> 928 aa, 102 kDa	
	<b>Observed MW:</b> 102 kDa	

## Applications

<b>Tested Applications:</b> WB, ELISA	<b>Positive Controls:</b> WB : Caco-2 cells,
<b>Cited Applications:</b> WB, IHC	
<b>Species Specificity:</b> human	
<b>Cited Species:</b> human	

## Background Information

The RFX proteins represent an essential class II transcription factor family that share several conserved regions, including a centrally located DNA-binding domain (DBD) and a C-terminal D region that facilitates dimerization. RFX6, also known as RFXDC1, is a 928 amino acid nuclear protein that, via interactions with other RFX proteins, can bind DNA and is thought to activate the transcription of target genes. RFX6 is specifically expressed in pancreas, small intestine and colon. Mutations in the gene encoding RFX6 is the cause of the Mitchell-Riley syndrome (MIRIS), which is characterized by neonatal diabetes, duodenal and jejunal atresia, a hypoplastic or annular pancreas and absent gallbladder.

## Notable Publications

Author	Pubmed ID	Journal	Application
Zhiyu Qiu	38093528	Clin Transl Med	WB, IHC

## Storage

**Storage:**  
Store at -20°C. Stable for one year after shipment.  
**Storage Buffer:**  
PBS with 0.02% sodium azide and 50% glycerol pH 7.3.  
Aliquoting is unnecessary for -20°C storage

For technical support and original validation data for this product please contact:

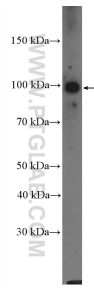
T: 4006900926

E: [Proteintech-CN@ptglab.com](mailto:Proteintech-CN@ptglab.com)

W: [ptgcn.com](http://ptgcn.com)

**This product is exclusively available under Proteintech Group brand and is not available to purchase from any other manufacturer.**

## Selected Validation Data



Caco-2 cells were subjected to SDS PAGE followed by western blot with 22551-1-AP (RFX6 Antibody) at dilution of 1:300 incubated at room temperature for 1.5 hours.