

For Research Use Only

TMEM168 Polyclonal antibody

Catalog Number: 22527-1-AP

3 Publications



Basic Information

Catalog Number:

22527-1-AP

Concentration:

1000 ug/ml

Source:

Rabbit

Isotype:

IgG

Immunogen Catalog Number:

AG18337

GenBank Accession Number:

BC030804

GeneID (NCBI):

64418

UNIPROT ID:

Q9H0V1

Full Name:

transmembrane protein 168

Calculated MW:

697 aa, 80 kDa

Observed MW:

110-130 kDa

Purification Method:

Antigen Affinity purified

Recommended Dilutions:

WB 1:1000-1:4000

IP 0.5-4.0 ug for 1.0-3.0 mg of total protein lysate

IHC 1:20-1:200

Applications

Tested Applications:

WB, IHC, IP, ELISA

Cited Applications:

WB, IF, IP

Species Specificity:

human, mouse, rat

Cited Species:

human

Note-IHC: suggested antigen retrieval with TE buffer pH 9.0; (*) Alternatively, antigen retrieval may be performed with citrate buffer pH 6.0

Positive Controls:

WB : mouse brain tissue, PC-3 cells, rat brain tissue

IP : mouse brain tissue,

IHC : human testis tissue,

Background Information

Notable Publications

Author	Pubmed ID	Journal	Application
Jie Xu	30940290	Oncol Res	
Akio Shimizu	32175648	FASEB J	WB,IF
Le Kim Chi Nguyen	34086898	J Biochem	IP, WB

Storage

Storage:

Store at -20°C. Stable for one year after shipment.

Storage Buffer:

PBS with 0.02% sodium azide and 50% glycerol, pH7.3

Aliquoting is unnecessary for -20°C storage

For technical support and original validation data for this product please contact:

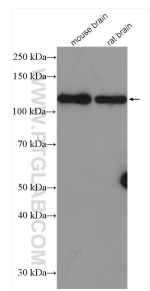
T: 4006900926

E: Proteintech-CN@ptglab.com

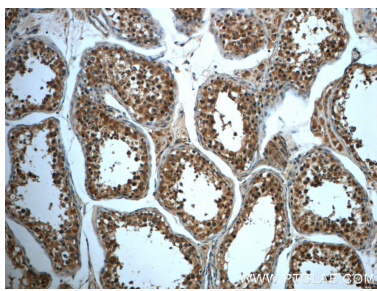
W: ptgcn.com

This product is exclusively available under Proteintech Group brand and is not available to purchase from any other manufacturer.

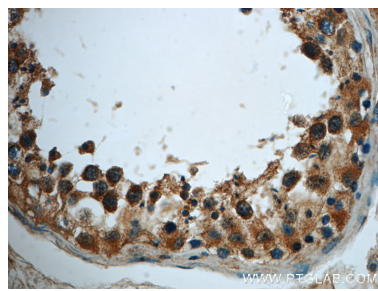
Selected Validation Data



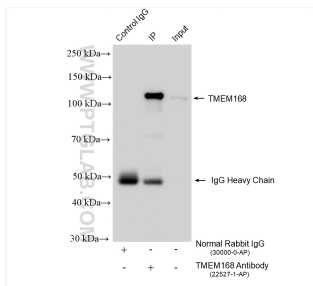
Various lysates were subjected to SDS PAGE followed by western blot with 22527-1-AP (TMEM168 antibody) at dilution of 1:2000 incubated at room temperature for 1.5 hours.



Immunohistochemical analysis of paraffin-embedded human testis slide using 22527-1-AP (TMEM168 Antibody) at dilution of 1:50.



Immunohistochemical analysis of paraffin-embedded human testis slide using 22527-1-AP (TMEM168 Antibody) at dilution of 1:50.



IP result of anti-TMEM168 (IP:22527-1-AP, 4ug; Detection:22527-1-AP 1:3000) with mouse brain tissue lysate 2120 ug.