

For Research Use Only

# Dopamine Transporter/DAT Polyclonal antibody, PBS Only

Catalog Number: 22524-1-PBS



## Basic Information

Catalog Number:

22524-1-PBS

Concentration:

1 mg/ml

Source:

Rabbit

Isotype:

IgG

Immunogen Catalog Number:

AG18297

GenBank Accession Number:

BC133003

GeneID (NCBI):

6531

UNIPROT ID:

Q01959

Full Name:

solute carrier family 6  
(neurotransmitter transporter,  
dopamine), member 3

Calculated MW:

620 aa, 68 kDa

Observed MW:

68 kDa

Purification Method:

Antigen affinity purification

## Applications

Tested Applications:

WB, IHC, IF-P, IF-Fro, IP, Indirect ELISA

Species Specificity:

human, mouse, rat

## Background Information

DAT, also name as SLC6A3, is dopamine transporter which is a member of the sodium- and chloride- dependent neurotransmitter transporter family. Dopamine(DA) released from neurons is cleared by the DA transporter (DAT). Altered dopaminergic signaling is linked to multiple neuropsychiatric disorders, such as attention deficit hyperactive disorder, mood disorders, schizophrenia, autism and so on (PMID:30755521). 22524-1-AP can detect 70-80kDa band, which is consistent with the report (PMID:12746456).

## Storage

Storage:

Store at -80°C.

**The product is shipped with ice packs. Upon receipt, store it immediately at -80°C**

Storage Buffer:

PBS only, pH7.3

For technical support and original validation data for this product please contact:

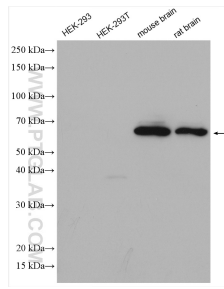
T: 4006900926

E: Proteintech-CN@ptglab.com

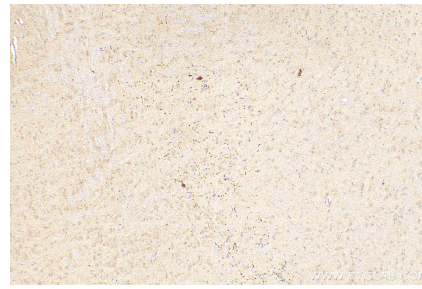
W: ptgcn.com

**This product is exclusively available under Proteintech Group brand and is not available to purchase from any other manufacturer.**

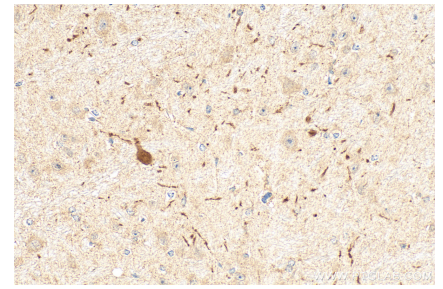
## Selected Validation Data



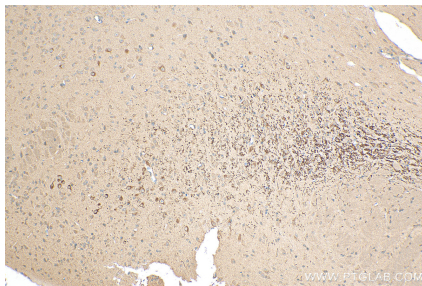
Various lysates were subjected to SDS PAGE followed by western blot with 22524-1-AP (DAT antibody) at dilution of 1:1000 incubated at room temperature for 1.5 hours. This data was developed using the same antibody clone with 22524-1-PBS in a different storage buffer formulation.



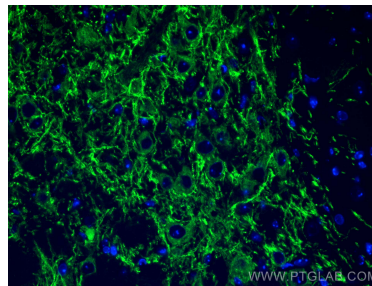
Immunohistochemical analysis of paraffin-embedded mouse brain tissue slide using 22524-1-AP (DAT antibody) at dilution of 1:200 (under 10x lens). Heat mediated antigen retrieval with Tris-EDTA buffer (pH 9.0). This data was developed using the same antibody clone with 22524-1-PBS in a different storage buffer formulation.



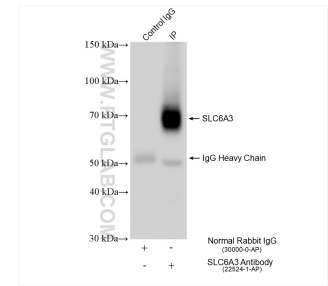
Immunohistochemical analysis of paraffin-embedded mouse brain tissue slide using 22524-1-AP (DAT antibody) at dilution of 1:200 (under 40x lens). Heat mediated antigen retrieval with Tris-EDTA buffer (pH 9.0). This data was developed using the same antibody clone with 22524-1-PBS in a different storage buffer formulation.



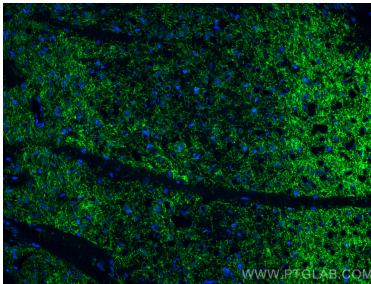
Immunohistochemical analysis of paraffin-embedded mouse brain tissue slide using 22524-1-AP (DAT antibody) at dilution of 1:200 (under 10x lens). Heat mediated antigen retrieval with Tris-EDTA buffer (pH 9.0). This data was developed using the same antibody clone with 22524-1-PBS in a different storage buffer formulation.



Immunofluorescent analysis of (4% PFA) fixed mouse brain tissue using DAT antibody (22524-1-AP) at dilution of 1:200 and CoraLite@488-Conjugated AffiniPure Goat Anti-Rabbit IgG(H+L). This data was developed using the same antibody clone with 22524-1-PBS in a different storage buffer formulation.



IP result of anti-Dopamine Transporter/DAT (IP:22524-1-AP, 4ug; Detection:22524-1-AP 1:1000) with mouse brain tissue lysate 1720 ug. This data was developed using the same antibody clone with 22524-1-PBS in a different storage buffer formulation.



Immunofluorescent analysis of (4% PFA) fixed frozen OCT-embedded mouse brain tissue using Dopamine Transporter/DAT antibody (22524-1-AP) at dilution of 1:200 and CoraLite@488-Conjugated Goat Anti-Rabbit IgG(H+L) (SA00013-2). This data was developed using the same antibody clone with 22524-1-PBS in a different storage buffer formulation.