

For Research Use Only

AIRE Polyclonal antibody

Catalog Number: 22517-1-AP

5 Publications



Basic Information

Catalog Number:

22517-1-AP

Concentration:

500 µg/ml

Source:

Rabbit

Isotype:

IgG

Immunogen Catalog Number:

AG18249

GenBank Accession Number:

BC137270

GeneID (NCBI):

326

UNIPROT ID:

O43918

Full Name:

autoimmune regulator

Calculated MW:

545 aa, 58 kDa

Observed MW:

58-69 kDa

Purification Method:

Antigen Affinity purified

Recommended Dilutions:

WB 1:500-1:2000

IHC 1:50-1:500

IF/ICC 1:50-1:500

Applications

Tested Applications:

WB, IHC, IF/ICC, ELISA

Cited Applications:

WB, IHC, IF

Species Specificity:

human, mouse

Cited Species:

human, mouse

Note-IHC: suggested antigen retrieval with TE buffer pH 9.0; (*) Alternatively, antigen retrieval may be performed with citrate buffer pH 6.0

Positive Controls:

WB: L02 cells, human plasma tissue, human spleen tissue, mouse thymus tissue, U-937 cells

IHC: human thymus tissue,

IF/ICC: HeLa cells,

Background Information

The function of the protein is not well defined, however it contains zinc finger motifs suggestive of a transcription factor. The protein (isoform 1) is localized to both the nucleus and cytoplasm. Three splice variant mRNAs products have been described [1]. The longer AIRE1 mRNA appears to be more abundant and includes exons 1 through 14. Splice variant AIRE2 includes a portion of the non-coding region of exon 1, an alternatively spliced longer exon 8, plus exons 9 through 14. Variant AIRE3 includes the same exon 1-8-9 sequences as found in AIRE2 but utilizes additional alternative splicing in exon 10 that shifts the reading frame such that a stop codon in exon 12 is utilized. The resulting protein products of these splice variants differ significantly. Defects in this gene cause the autosomal-recessive systemic autoimmune disease termed autoimmune polyendocrinopathy-candidiasis-ectodermal dystrophy (APECED).

Notable Publications

Author	Pubmed ID	Journal	Application
Zhongwei Xin	36115836	Nat Commun	IF
Yoshihiko Tomofuji	32601470	Nat Immunol	WB
H M Du	31238861	Biochemistry (Mosc)	WB

Storage

Storage:

Store at -20°C. Stable for one year after shipment.

Storage Buffer:

PBS with 0.02% sodium azide and 50% glycerol pH 7.3.

Aliquoting is unnecessary for -20°C storage

For technical support and original validation data for this product please contact:

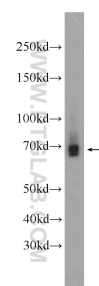
T: 4006900926

E: Proteintech-CN@ptglab.com

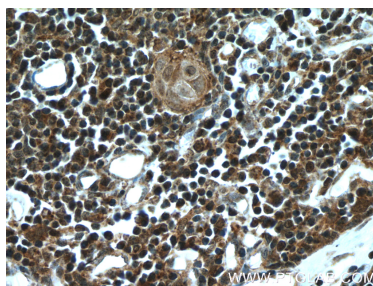
W: ptgcn.com

This product is exclusively available under Proteintech Group brand and is not available to purchase from any other manufacturer.

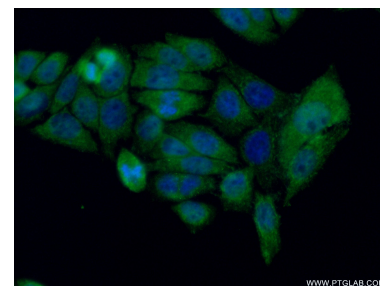
Selected Validation Data



L02 cells were subjected to SDS PAGE followed by western blot with 22517-1-AP (AIRE Antibody) at dilution of 1:1000 incubated at room temperature for 1.5 hours.



Immunohistochemical analysis of paraffin-embedded human thymus tissue slide using 22517-1-AP (AIRE Antibody) at dilution of 1:200 (under 40x lens). Heat mediated antigen retrieval with Tris-EDTA buffer (pH 9.0).



Immunofluorescent analysis of (4% PFA) fixed HeLa cells using 22517-1-AP (AIRE antibody) at dilution of 1:50 and Alexa Fluor 488-conjugated Goat Anti-Rabbit IgG(H+L).