

For Research Use Only

# LLGL1 Polyclonal antibody, PBS Only

Catalog Number: 22496-1-PBS



## Basic Information

Catalog Number:

22496-1-PBS

Size:

1mg/ml

Source:

Rabbit

Isotype:

IgG

Immunogen Catalog Number:

AG18057

GenBank Accession Number:

BC151838

GeneID (NCBI):

3996

UNIPROT ID:

Q15334

Full Name:

lethal giant larvae homolog 1  
(Drosophila)

Calculated MW:

1064 aa, 115 kDa

Observed MW:

115 kDa

Purification Method:

Antigen Affinity purified

## Applications

Tested Applications:

WB, IF/ICC, ELISA

Species Specificity:

human

## Background Information

Lethal giant larvae (Lgl) is a scaffolding protein that regulates the establishment of apical-basal polarity in epithelial cells. The human homologs of Lgl are known as LLGL1 and LLGL2. LLGL1 is a tumor suppressor in multiple human cancers, including hepatocellular carcinoma, malignant melanoma, and colorectal cancer (PMID: 34178676; 15735678; 16170365). LLGL2 functions as a promoter of tumor growth and not as a tumor suppressor in ER+ breast cancer (PMID: 30996345).

## Storage

Storage:

Store at -80°C.

**The product is shipped with ice packs. Upon receipt, store it immediately at -80°C**

Storage Buffer:

PBS Only

For technical support and original validation data for this product please contact:

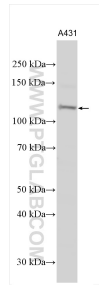
T: 4006900926

E: [Proteintech-CN@ptglab.com](mailto:Proteintech-CN@ptglab.com)

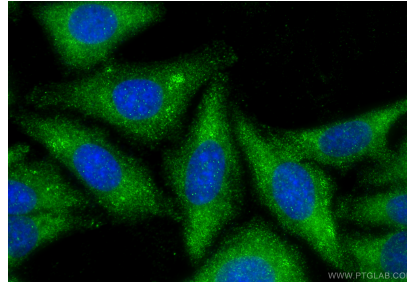
W: [ptgcn.com](http://ptgcn.com)

**This product is exclusively available under Proteintech Group brand and is not available to purchase from any other manufacturer.**

## Selected Validation Data



A431 cells were subjected to SDS PAGE followed by western blot with 22496-1-AP (LLGL1 antibody) at dilution of 1:800 incubated at room temperature for 1.5 hours. This data was developed using the same antibody clone with 22496-1-PBS in a different storage buffer formulation.



Immunofluorescent analysis of (-20°C Ethanol) fixed HepG2 cells using LLGL1 antibody (22496-1-AP) at dilution of 1:400 and CoraLite® 488-Conjugated Goat Anti-Rabbit IgG(H+L) (SA00013-2). This data was developed using the same antibody clone with 22496-1-PBS in a different storage buffer formulation.