

For Research Use Only

# SPDYC Polyclonal antibody

Catalog Number: 22471-1-AP



## Basic Information

<b>Catalog Number:</b> 22471-1-AP	<b>GenBank Accession Number:</b> BC137244	<b>Purification Method:</b> Antigen Affinity purified
<b>Size:</b> 400 µg/ml	<b>GeneID (NCBI):</b> 387778	<b>Recommended Dilutions:</b> IHC 1:250-1:1000
<b>Source:</b> Rabbit	<b>UNIPROT ID:</b> Q5MJ68	
<b>Isotype:</b> IgG	<b>Full Name:</b> speedy homolog C (Xenopus laevis)	
<b>Immunogen Catalog Number:</b> AG18126	<b>Calculated MW:</b> 293 aa, 33 kDa	
	<b>Observed MW:</b> 33-40 kDa	

## Applications

**Tested Applications:**  
IHC, ELISA

**Species Specificity:**  
human

**Note-IHC: suggested antigen retrieval with TE buffer pH 9.0; (\*) Alternatively, antigen retrieval may be performed with citrate buffer pH 6.0**

**Positive Controls:**

**IHC:** human liver tissue, human kidney tissue, human lung cancer tissue

## Background Information

SPDYC (Speedy protein C), also known as RINGOC and Ringo2, promotes progression through the cell cycle via binding and activation of CDK1 and CDK2. Downregulation of SPDYC inhibits cell growth, reduces the fraction of cells in G1, and increases the S and G2 populations (PMID: 18802405). SPDYC is involved in the spindle-assembly checkpoint and required for recruitment of MAD2L1, BUBR1 and BUB1 to kinetochores (Uniprot).

## Storage

**Storage:**

Store at -20°C. Stable for one year after shipment.

**Storage Buffer:**

PBS with 0.02% sodium azide and 50% glycerol pH 7.3.

Aliquoting is unnecessary for -20°C storage

For technical support and original validation data for this product please contact:

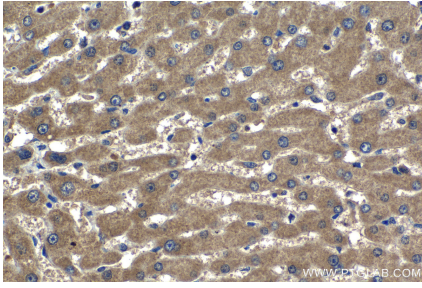
T: 4006900926

E: Proteintech-CN@ptglab.com

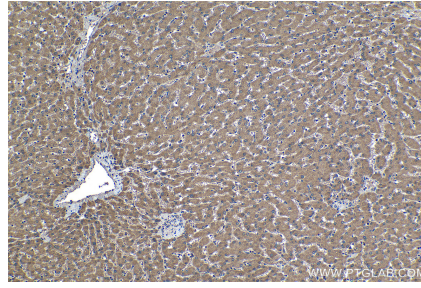
W: ptgcn.com

**This product is exclusively available under Proteintech Group brand and is not available to purchase from any other manufacturer.**

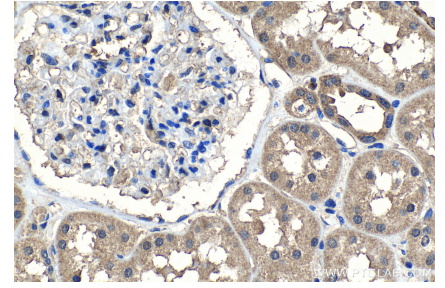
## Selected Validation Data



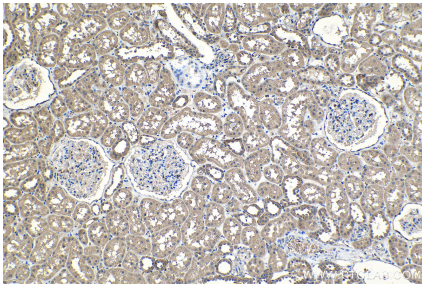
Immunohistochemical analysis of paraffin-embedded human liver tissue slide using 22471-1-AP (SPDYC antibody) at dilution of 1:500 (under 40x lens). Heat mediated antigen retrieval with Tris-EDTA buffer (pH 9.0).



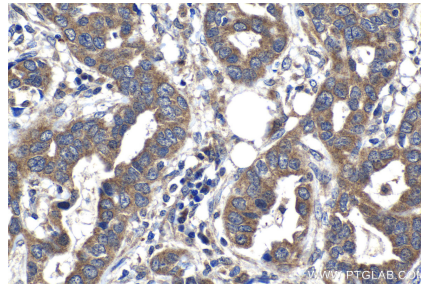
Immunohistochemical analysis of paraffin-embedded human liver tissue slide using 22471-1-AP (SPDYC antibody) at dilution of 1:500 (under 10x lens). Heat mediated antigen retrieval with Tris-EDTA buffer (pH 9.0).



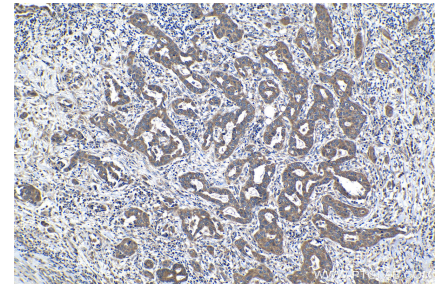
Immunohistochemical analysis of paraffin-embedded human kidney tissue slide using 22471-1-AP (SPDYC antibody) at dilution of 1:500 (under 40x lens). Heat mediated antigen retrieval with Tris-EDTA buffer (pH 9.0).



Immunohistochemical analysis of paraffin-embedded human kidney tissue slide using 22471-1-AP (SPDYC antibody) at dilution of 1:500 (under 10x lens). Heat mediated antigen retrieval with Tris-EDTA buffer (pH 9.0).



Immunohistochemical analysis of paraffin-embedded human lung cancer tissue slide using 22471-1-AP (SPDYC antibody) at dilution of 1:500 (under 40x lens). Heat mediated antigen retrieval with Tris-EDTA buffer (pH 9.0).



Immunohistochemical analysis of paraffin-embedded human lung cancer tissue slide using 22471-1-AP (SPDYC antibody) at dilution of 1:500 (under 10x lens). Heat mediated antigen retrieval with Tris-EDTA buffer (pH 9.0).