

For Research Use Only

SIKE1 Polyclonal antibody

Catalog Number: 22432-1-AP



Basic Information

Catalog Number:

22432-1-AP

Size:

800 ug/ml

Source:

Rabbit

Isotype:

IgG

Immunogen Catalog Number:

AG18196

GenBank Accession Number:

BC005934

GeneID (NCBI):

80143

UNIPROT ID:

Q9BRV8

Full Name:

suppressor of IKK epsilon

Calculated MW:

207 aa, 24 kDa

Observed MW:

24 kDa

Purification Method:

Antigen affinity purification

Recommended Dilutions:

WB 1:1000-1:4000

Applications

Tested Applications:

WB, ELISA

Species Specificity:

human, mouse

Positive Controls:

WB : SH-SY5Y cells, HEK-293 cells, MCF-7 cells, mouse brain tissue

Background Information

Storage

Storage:

Store at -20°C. Stable for one year after shipment.

Storage Buffer:

PBS with 0.02% sodium azide and 50% glycerol pH 7.3.

Aliquoting is unnecessary for -20°C storage

For technical support and original validation data for this product please contact:

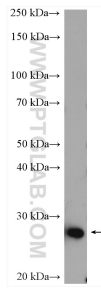
T: 4006900926

E: Proteintech-CN@ptglab.com

W: ptgcn.com

This product is exclusively available under Proteintech Group brand and is not available to purchase from any other manufacturer.

Selected Validation Data



SH-SY5Y cells were subjected to SDS PAGE followed by western blot with 22432-1-AP (SIKE1 antibody) at dilution of 1:2000 incubated at room temperature for 1.5 hours.