

For Research Use Only

DCP1A Polyclonal antibody

Catalog Number: 22373-1-AP **4 Publications**



Basic Information

Catalog Number: 22373-1-AP	GenBank Accession Number: BC007439	Purification Method: Antigen Affinity purified
Size: 650 µg/ml	GeneID (NCBI): 55802	Recommended Dilutions: WB 1:2000-1:10000
Source: Rabbit	UNIPROT ID: Q9NPI6	IP 0.5-4.0 µg for 1.0-3.0 mg of total protein lysate
Isotype: IgG	Full Name: DCP1 decapping enzyme homolog A (S. cerevisiae)	IHC 1:20-1:200
Immunogen Catalog Number: AG18027	Calculated MW: 582 aa, 63 kDa	IF 1:200-1:800
	Observed MW: 70 kDa	

Applications

Tested Applications:
FC, IF/ICC, IHC, IP, WB, ELISA

Cited Applications:
WB, IP, IF

Species Specificity:
human, mouse, rat

Cited Species:
human, mouse

Note-IHC: suggested antigen retrieval with TE buffer pH 9.0; (*) Alternatively, antigen retrieval may be performed with citrate buffer pH 6.0

Positive Controls:

WB: HEK-293 cells, mouse brain tissue, mouse lung tissue, Jurkat cells, MCF-7 cells, rat brain tissue

IP: mouse brain tissue,

IHC: mouse lung tissue,

IF: HepG2 cells,

Background Information

DCP1 decapping enzyme homolog A (S. cerevisiae), known as mRNA-decapping enzyme 1A (DCP1A), is necessary for the degradation of mRNAs, both in normal mRNA turnover and in nonsense-mediated mRNA decay. Removes the 7-methyl guanine cap structure from mRNA molecules, yielding a 5'-phosphorylated mRNA fragment and 7m-GDP. Contributes to the transactivation of target genes after stimulation by TGFB1. This antibody specifically reacts with the 70kd DCP1A protein.

Notable Publications

Author	Pubmed ID	Journal	Application
Dongxu Jiang	29537490	FEBS Lett	WB,IF
Yuanyuan Zhang	37065560	J Thorac Dis	WB
Nicolas Curdy	36884350	Cell Rep	IF,IP

Storage

Storage:

Store at -20°C. Stable for one year after shipment.

Storage Buffer:

PBS with 0.02% sodium azide and 50% glycerol pH 7.3.

Aliquoting is unnecessary for -20°C storage

For technical support and original validation data for this product please contact:

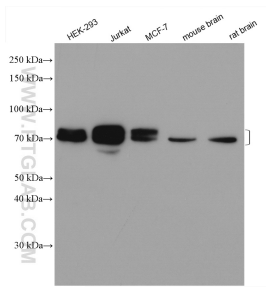
T: 4006900926

E: Proteintech-CN@ptglab.com

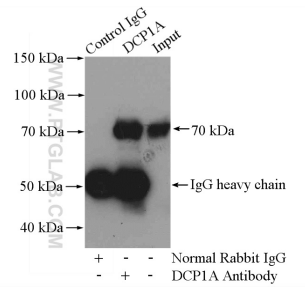
W: ptgcn.com

This product is exclusively available under Proteintech Group brand and is not available to purchase from any other manufacturer.

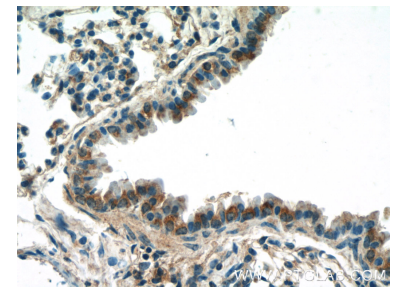
Selected Validation Data



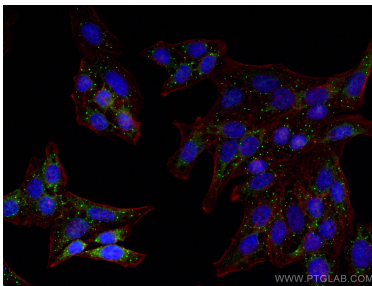
Various lysates were subjected to SDS PAGE followed by western blot with 22373-1-AP (DCP1A antibody) at dilution of 1:5000 incubated at room temperature for 1.5 hours.



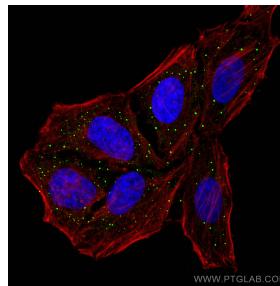
IP result of anti-DCP1A (IP:22373-1-AP, 4ug; Detection:22373-1-AP 1:3000) with mouse brain tissue lysate 3200ug.



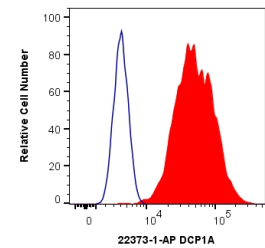
Immunohistochemical analysis of paraffin-embedded mouse lung tissue slide using 22373-1-AP (DCP1A Antibody) at dilution of 1:50 (under 40x lens).



Immunofluorescent analysis of (4% PFA) fixed HepG2 cells using DCP1A antibody (22373-1-AP) at dilution of 1:400 and CoraLite®488-Conjugated AffiniPure Goat Anti-Rabbit IgG(H+L), CL594-Phalloidin (red).



Immunofluorescent analysis of (4% PFA) fixed HepG2 cells using DCP1A antibody (22373-1-AP) at dilution of 1:400 and CoraLite®488-Conjugated AffiniPure Goat Anti-Rabbit IgG(H+L), CL594-Phalloidin (red).



1X10⁶ HeLa cells were intracellularly stained with 0.4 ug Anti-Human DCP1A (22373-1-AP) and CoraLite®488-Conjugated AffiniPure Goat Anti-Rabbit IgG(H+L) at dilution 1:1000 (red), or 0.4 ug Isotype Control. Cells were fixed with 4% PFA and permeabilized with Flow Cytometry Perm Buffer (PF00011-C).