

For Research Use Only

# CXorf15 Polyclonal antibody, PBS Only

Catalog Number: 22357-1-PBS



## Basic Information

Catalog Number:  
22357-1-PBS

Source:  
Rabbit

Isotype:  
IgG

Immunogen Catalog Number:  
AG17936

GenBank Accession Number:  
BC101576

GeneID (NCBI):  
55787

UNIPROT ID:  
Q9NUQ3

Full Name:  
chromosome X open reading frame 15

Calculated MW:  
528 aa, 61 kDa

Observed MW:  
66-70 kDa

Purification Method:  
Antigen Affinity purified

## Applications

Tested Applications:  
WB, IHC, IF/ICC, Indirect ELISA

Species Specificity:  
human, mouse

## Background Information

### Storage

Storage:  
Store at -80°C.  
**The product is shipped with ice packs. Upon receipt, store it immediately at -80°C**  
Storage Buffer:  
PBS only, pH7.3

For technical support and original validation data for this product please contact:

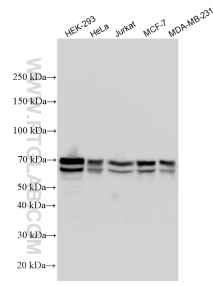
T: 4006900926

E: [Proteintech-CN@ptglab.com](mailto:Proteintech-CN@ptglab.com)

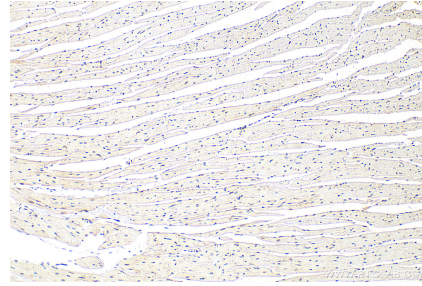
W: [ptgcn.com](http://ptgcn.com)

**This product is exclusively available under Proteintech Group brand and is not available to purchase from any other manufacturer.**

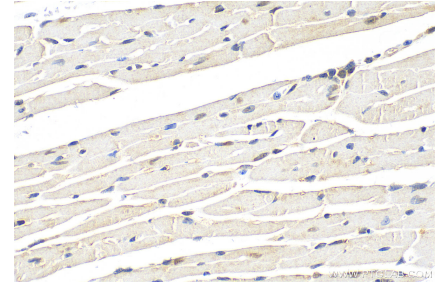
## Selected Validation Data



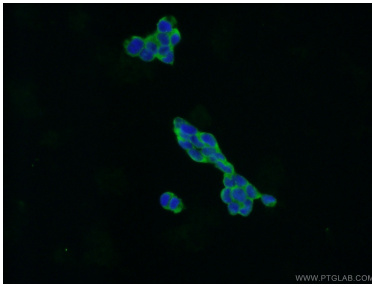
Various lysates were subjected to SDS PAGE followed by western blot with 22357-1-AP (CXorf15 antibody) at dilution of 1:5000 incubated at room temperature for 1.5 hours. This data was developed using the same antibody clone with 22357-1-PBS in a different storage buffer formulation.



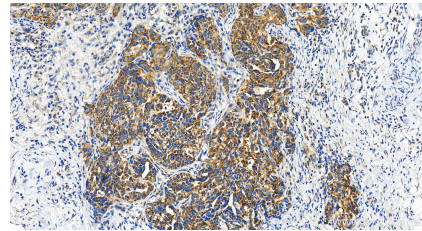
Immunohistochemical analysis of paraffin-embedded mouse heart tissue slide using 22357-1-AP (CXorf15 antibody) at dilution of 1:200 (under 10x lens). Heat mediated antigen retrieval with Tris-EDTA buffer (pH 9.0). This data was developed using the same antibody clone with 22357-1-PBS in a different storage buffer formulation.



Immunohistochemical analysis of paraffin-embedded mouse heart tissue slide using 22357-1-AP (CXorf15 antibody) at dilution of 1:200 (under 40x lens). Heat mediated antigen retrieval with Tris-EDTA buffer (pH 9.0). This data was developed using the same antibody clone with 22357-1-PBS in a different storage buffer formulation.



Immunofluorescent analysis of HEK-293 cells using 22357-1-AP (CXorf15 antibody) at dilution of 1:50 and Alexa Fluor 488-conjugated AffiniPure Goat Anti-Rabbit IgG(H+L). This data was developed using the same antibody clone with 22357-1-PBS in a different storage buffer formulation.



Immunohistochemical analysis of paraffin-embedded human ovary cancer tissue slide using 22357-1-AP (CXorf15 antibody) at dilution of 1:400 (under 20x lens). Heat mediated antigen retrieval with Tris-EDTA buffer (pH 9.0). This data was developed using the same antibody clone with 22357-1-PBS in a different storage buffer formulation.