

For Research Use Only

BTG2 Polyclonal antibody

Catalog Number: 22339-1-AP

Featured Product

11 Publications



Basic Information

Catalog Number:

22339-1-AP

Concentration:

500 ug/ml

Source:

Rabbit

Isotype:

IgG

Immunogen Catalog Number:

AG17819

GenBank Accession Number:

BC105949

GeneID (NCBI):

7832

UNIPROT ID:

P78543

Full Name:

BTG family, member 2

Calculated MW:

158 aa, 17 kDa

Purification Method:

Antigen affinity purification

Recommended Dilutions:

IHC 1:50-1:500

IF/ICC 1:200-1:800

Applications

Tested Applications:

IHC, IF/ICC, FC (Intra), ELISA

Cited Applications:

WB, IHC, IF

Species Specificity:

human, mouse

Cited Species:

human, mouse

Note-IHC: suggested antigen retrieval with TE buffer pH 9.0; (*) Alternatively, antigen retrieval may be performed with citrate buffer pH 6.0

Positive Controls:

IHC : mouse small intestine tissue, human kidney tissue

IF/ICC : Neuro-2a cells,

Background Information

Protein BTG2, the anti-proliferative human homolog of murine Pc3/Tis21, belongs to the BTG/Tob family. This family has structurally related proteins that appear to have anti-proliferative properties. It has been demonstrated that BTG2 is p53-inducible and is involved in cell cycle control and cellular response to DNA damage (PMID: 8944033). As a transcriptional co-regulator, BTG2 has been shown to interact with CAF1 and POP2, and works as a co-activator of ERF-mediated transcription via a CCR4-like complex (PMID: 18974182).

Notable Publications

Author	Pubmed ID	Journal	Application
Shi Li	31885582	J Oncol	WB
Chen-Song Huang	29098552	Dig Dis Sci	IHC
Aitao Nai	35372503	Front Mol Biosci	WB

Storage

Storage:

Store at -20°C. Stable for one year after shipment.

Storage Buffer:

PBS with 0.02% sodium azide and 50% glycerol pH 7.3.

Aliquoting is unnecessary for -20°C storage

For technical support and original validation data for this product please contact:

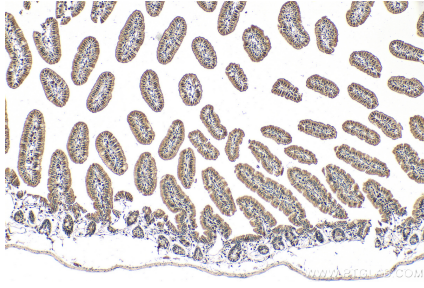
T: 4006900926

E: Proteintech-CN@ptglab.com

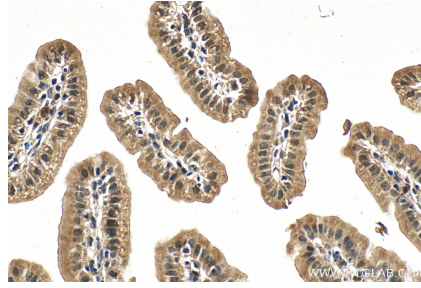
W: ptgcn.com

This product is exclusively available under Proteintech Group brand and is not available to purchase from any other manufacturer.

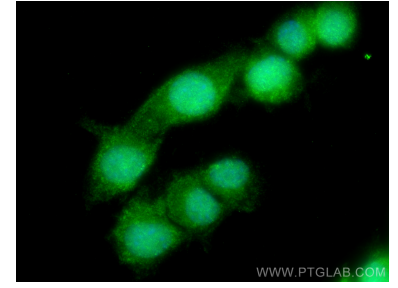
Selected Validation Data



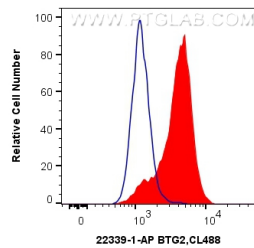
Immunohistochemical analysis of paraffin-embedded mouse small intestine tissue slide using 22339-1-AP (BTG2 antibody) at dilution of 1:200 (under 10x lens). Heat mediated antigen retrieval with Tris-EDTA buffer (pH 9.0).



Immunohistochemical analysis of paraffin-embedded mouse small intestine tissue slide using 22339-1-AP (BTG2 antibody) at dilution of 1:200 (under 40x lens). Heat mediated antigen retrieval with Tris-EDTA buffer (pH 9.0).



Immunofluorescent analysis of (4% PFA) fixed Neuro-2a cells using BTG2 antibody (22339-1-AP) at dilution of 1:400 and CoraLite®488-Conjugated AffiniPure Goat Anti-Rabbit IgG(H+L).



1X10⁶ SH-SY5Y cells were intracellularly stained with 0.4 ug Anti-Human BTG2 (22339-1-AP) and CoraLite®488-Conjugated AffiniPure Goat Anti-Rabbit IgG(H+L) at dilution 1:1000 (red), or 0.4 ug Control Antibody. Cells were fixed with 4% PFA and permeabilized with Flow Cytometry Perm Buffer (PF00011-C).