

For Research Use Only

P glycoprotein Polyclonal antibody

Catalog Number: 22336-1-AP

109 Publications



Basic Information

Catalog Number:

22336-1-AP

Concentration:

600 µg/ml

Source:

Rabbit

Isotype:

IgG

Immunogen Catalog Number:

AG17811

GenBank Accession Number:

BC130424

GeneID (NCBI):

5243

UNIPROT ID:

P08183

Full Name:

ATP-binding cassette, sub-family B (MDR/TAP), member 1

Calculated MW:

1280 aa, 142 kDa

Observed MW:

130-150 kDa

Purification Method:

Antigen affinity purification

Recommended Dilutions:

WB 1:500-1:1000

IP 0.5-4.0 µg for 1.0-3.0 mg of total protein lysate

IHC 1:50-1:500

Applications

Tested Applications:

WB, IP, IHC, ELISA

Cited Applications:

WB, IHC, IF, IP, CoIP

Species Specificity:

human

Cited Species:

human, mouse, rat, pig

Note-IHC: suggested antigen retrieval with TE buffer pH 9.0; (*) Alternatively, antigen retrieval may be performed with citrate buffer pH 6.0

Positive Controls:

WB: unboiled HeLa cells, unboiled HepG2 cells

IP: human placenta tissue,

IHC: human liver cancer tissue, human kidney tissue

Background Information

ABCB1 (also known as P-gp/ P-glycoprotein, MDR1/multidrug-resistance 1) is a plasma membrane protein first discovered in multidrug resistant tumor cells. ABCB1 can extrude a large number of medically relevant compounds from cells and causes drug resistance. ABCB1 is expressed in a variety of human cancers as well as normal tissues including brain, and placenta. Overexpression of ABCB1 correlates with a negative prognosis in several types of cancer. For optimal WB detection with 22336-1-AP, we recommend to avoid boiling the sample after lysis.

Notable Publications

Author	Pubmed ID	Journal	Application
Kaili Liu	33007707	Transl Oncol	WB, IF, IHC
Dongya Chai	32963175	Biol Pharm Bull	WB
Y Q Jiang	27706681	Genet Mol Res	WB

Storage

Storage:

Store at -20°C. Stable for one year after shipment.

Storage Buffer:

PBS with 0.02% sodium azide and 50% glycerol pH 7.3.

Aliquoting is unnecessary for -20°C storage

For technical support and original validation data for this product please contact:

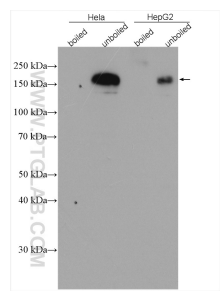
T: 4006900926

E: Proteintech-CN@ptglab.com

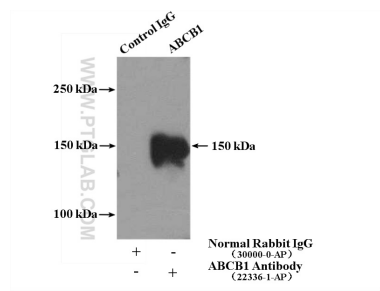
W: ptgcn.com

This product is exclusively available under Proteintech Group brand and is not available to purchase from any other manufacturer.

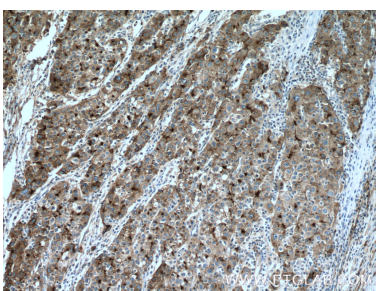
Selected Validation Data



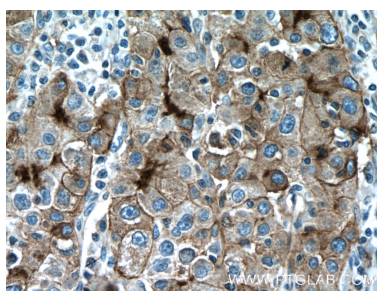
Various lysates were subjected to SDS PAGE followed by western blot with 22336-1-AP (P glycoprotein antibody) at dilution of 1:500 incubated at room temperature for 1.5 hours.



IP result of anti-P glycoprotein (IP:22336-1-AP, 4ug; Detection:22336-1-AP 1:300) with human placenta tissue lysate 4000ug.



Immunohistochemical analysis of paraffin-embedded human liver cancer tissue slide using 22336-1-AP (P glycoprotein antibody at dilution of 1:500 (under 10x lens). Heat mediated antigen retrieval with Tris-EDTA buffer (pH 9.0).



Immunohistochemical analysis of paraffin-embedded human liver cancer tissue slide using 22336-1-AP (P glycoprotein antibody at dilution of 1:500 (under 40x lens). Heat mediated antigen retrieval with Tris-EDTA buffer (pH 9.0).