

# CCL27 Polyclonal antibody

Catalog Number: 22301-1-AP

## Basic Information

**Catalog Number:**

22301-1-AP

**Size:**

300 µg/ml

**Source:**

Rabbit

**Isotype:**

IgG

**GenBank Accession Number:**

NM\_006664

**GeneID (NCBI):**

10850

**UNIPROT ID:**

Q9Y4X3

**Full Name:**

chemokine (C-C motif) ligand 27

**Calculated MW:**

13 kDa

**Purification Method:**

Antigen affinity purification

**Recommended Dilutions:**

IHC 1:20-1:200

IF/ICC 1:10-1:100

## Applications

**Tested Applications:**

IF/ICC, IHC, ELISA

**Species Specificity:**

human

**Note-IHC: suggested antigen retrieval with TE buffer pH 9.0; (\*) Alternatively, antigen retrieval may be performed with citrate buffer pH 6.0**

**Positive Controls:**

**IHC :** human testis tissue, human liver tissue, human liver cancer tissue, human skin tissue, human skin cancer tissue

**IF/ICC :** A431 cells,

## Background Information

CCL27, also known as CTACK, is a member of the CC chemokine subfamily. CCL27 is predominantly expressed in skin and selectively attracts cutaneous lymphocyte antigen-positive T cells and Langerhans cells. The CCL27 secreted from keratinocytes was reportedly involved in inflammatory skin diseases such as atopic dermatitis, contact dermatitis, and psoriasis. CCL27 is a ligand to CCR10. The binding of CCL27 to CCR10 on T cells promotes their migration to the skin, where they can then participate in local immune responses.

## Storage

**Storage:**

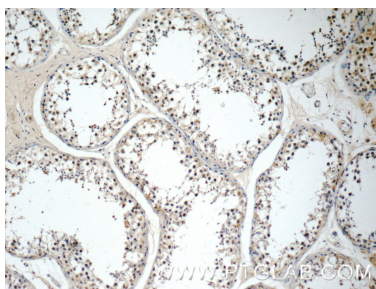
Store at -20°C. Stable for one year after shipment.

**Storage Buffer:**

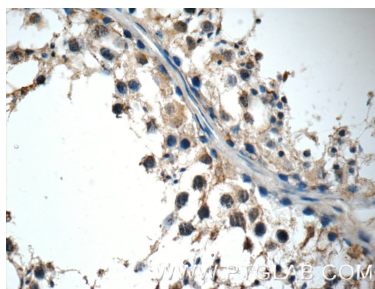
PBS with 0.02% sodium azide and 50% glycerol pH 7.3.

Aliquoting is unnecessary for -20°C storage

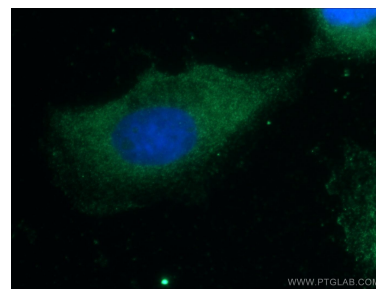
## Selected Validation Data



Immunohistochemical analysis of paraffin-embedded human testis tissue slide using 22301-1-AP (CCL27 Antibody) at dilution of 1:50 (under 10x lens).



Immunohistochemical analysis of paraffin-embedded human testis tissue slide using 22301-1-AP (CCL27 Antibody) at dilution of 1:50 (under 40x lens).



Immunofluorescent analysis of A431 cells using 22301-1-AP (CCL27 antibody) at dilution of 1:25 and Alexa Fluor 488-conjugated AffiniPure Goat Anti-Rabbit IgG(H+L).