

MYH7B Polyclonal antibody

Catalog Number: 22300-1-AP

Basic Information

Catalog Number:

22300-1-AP

Size:

500 µg/ml

Source:

Rabbit

Isotype:

IgG

GenBank Accession Number:

NM_020884

GeneID (NCBI):

57644

UNIPROT ID:

A7E2Y1

Full Name:

myosin, heavy chain 7B, cardiac muscle, beta

Calculated MW:

221 kDa

Observed MW:

200-230 kDa

Purification Method:

Antigen affinity purification

Recommended Dilutions:

WB 1:500-1:1000

Applications

Tested Applications:

WB, ELISA

Species Specificity:

mouse, rat

Positive Controls:

WB : mouse heart tissue, rat heart tissue

Background Information

Myosin heavy chain 7b (MYH7b) is an ancient member of the myosin heavy chain motor protein family that is expressed in striated muscles. In mammalian cardiac muscle, MYH7b RNA is expressed along with two other myosin heavy chains, β -myosin heavy chain (β -MyHC) and α -myosin heavy chain (α -MyHC). However, unlike β -MyHC and α -MyHC, which are maintained in a careful balance at the protein level, the MYH7b locus does not produce a full-length protein in the heart due to a posttranscriptional exon-skipping mechanism that occurs in a tissue-specific manner (PMID: 33895132). MYH7b can be detected as about 200-230 kDa.

Storage

Storage:

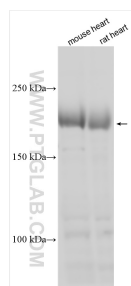
Store at -20°C. Stable for one year after shipment.

Storage Buffer:

PBS with 0.02% sodium azide and 50% glycerol pH 7.3.

Aliquoting is unnecessary for -20°C storage

Selected Validation Data



Various lysates were subjected to SDS PAGE followed by western blot with 22300-1-AP (MYH7B antibody) at dilution of 1:500 incubated at room temperature for 1.5 hours.