

For Research Use Only

MYH7-specific Polyclonal antibody

Catalog Number: 22280-1-AP

Featured Product

48 Publications



Basic Information

Catalog Number:

22280-1-AP

Size:

650 µg/ml

Source:

Rabbit

Isotype:

IgG

GenBank Accession Number:

NM_000257

GeneID (NCBI):

4625

UNIPROT ID:

P12883

Full Name:

myosin, heavy chain 7, cardiac muscle, beta

Calculated MW:

223 kDa

Observed MW:

200-220 kDa

Purification Method:

Antigen affinity purification

Recommended Dilutions:

WB 1:600-1:2000

IP 0.5-4.0 µg for 1.0-3.0 mg of total protein lysate

IHC 1:20-1:200

IF 1:50-1:500

Applications

Tested Applications:

WB, IP, IF/ICC, IF-P, IHC, ELISA

Cited Applications:

WB, IF, IHC

Species Specificity:

human, mouse

Cited Species:

human, goat, rat, mouse, zebrafish, pig

Note-IHC: suggested antigen retrieval with TE buffer pH 9.0; (*) Alternatively, antigen retrieval may be performed with citrate buffer pH 6.0

Positive Controls:

WB: mouse heart tissue,

IP: mouse heart tissue,

IHC: mouse heart tissue, human skeletal muscle tissue

IF: mouse heart tissue, H9C2 cells

Background Information

Myosin is the major contractile protein of all eukaryotic cells, existing as a hexameric molecule composed of two myosin heavy chains (MHCs) that contain the catalytic sites for ATP hydrolysis, and four lower molecular weight myosin light chains. MYH7 encodes the slow/beta-cardiac myosin heavy chain (MHC), which is the major MHC isoform of cardiac ventricles. It is also expressed in slow, oxidative, type 1 muscle fibers of skeletal muscle. Numerous mutations of MYH7 have been linked to familial hypertrophic cardiomyopathy. This antibody can specifically recognize endogenous MYH7, not cross-reacting with other MHCs. (2523412, 14520662)

Notable Publications

Author	Pubmed ID	Journal	Application
Shiyuan Huang	32936696	Am J Physiol Cell Physiol	WB
Teng Wu	33015041	Front Cell Dev Biol	WB, IHC
Yanan Pang	34540911	Front Cardiovasc Med	WB

Storage

Storage:

Store at -20°C. Stable for one year after shipment.

Storage Buffer:

PBS with 0.02% sodium azide and 50% glycerol pH 7.3.

Aliquoting is unnecessary for -20°C storage

For technical support and original validation data for this product please contact:

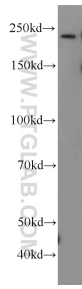
T: 4006900926

E: Proteintech-CN@ptglab.com

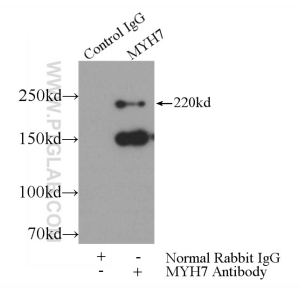
W: ptgcn.com

This product is exclusively available under Proteintech Group brand and is not available to purchase from any other manufacturer.

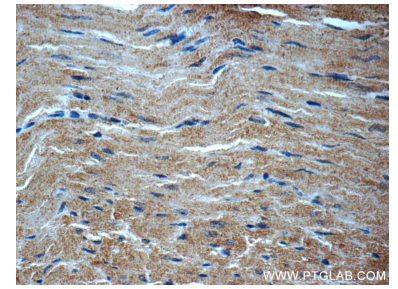
Selected Validation Data



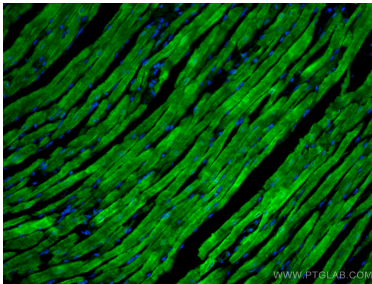
mouse heart tissue were subjected to SDS PAGE followed by western blot with 22280-1-AP (MYH7-specific antibody at dilution of 1:2000 incubated at room temperature for 1.5 hours.



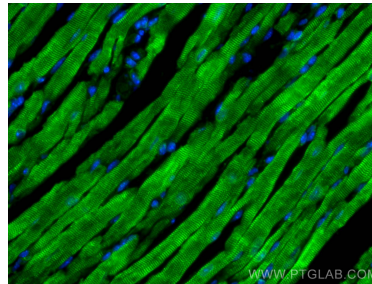
IP result of anti-MYH7-specific (IP:22280-1-AP, 5ug; Detection:22280-1-AP 1:300) with mouse heart tissue lysate 4000ug.



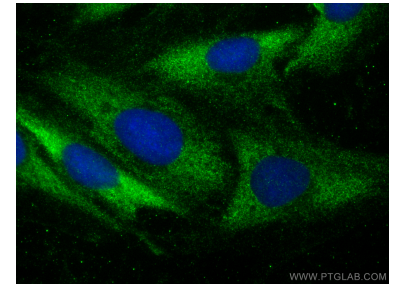
Immunohistochemical analysis of paraffin-embedded mouse heart tissue slide using 22280-1-AP (MYH7-specific antibody at dilution of 1:50 (under 40x lens).



Immunofluorescent analysis of (4% PFA) fixed paraffin-embedded mouse heart tissue using MYH7-specific antibody (22280-1-AP) at dilution of 1:200 and CoraLite®488-Conjugated AffiniPure Goat Anti-Rabbit IgG(H+L). Heat mediated antigen retrieval with Tris-EDTA buffer (pH 9.0).



Immunofluorescent analysis of (4% PFA) fixed mouse heart tissue using MYH7-specific antibody (22280-1-AP) at dilution of 1:200 and CoraLite®488-Conjugated AffiniPure Goat Anti-Rabbit IgG(H+L).



Immunofluorescent analysis of (-20°C Ethanol) fixed H9C2 cells using MYH7-specific antibody (22280-1-AP) at dilution of 1:600 and CoraLite®488-Conjugated AffiniPure Goat Anti-Rabbit IgG(H+L) (SA00013-2).