

For Research Use Only

CALML6 Polyclonal antibody, PBS Only

Catalog Number: 22274-1-PBS



Basic Information

Catalog Number:

22274-1-PBS

Size:

1 mg/ml

Source:

Rabbit

Isotype:

IgG

GenBank Accession Number:

NM_138705

GeneID (NCBI):

163688

UNIPROT ID:

Q8TD86

Full Name:

calmodulin-like 6

Calculated MW:

21 kDa

Observed MW:

21 kDa

Purification Method:

Antigen affinity purification

Applications

Tested Applications:

WB, IHC, Indirect ELISA

Species Specificity:

human, pig

Background Information

CALML6, also named as CAGLP, CALGP, belongs to the calmodulin family and Calglandulin subfamily. It contains 4 EF-hand domains. The antibody is specific to CALML6.

Storage

Storage:

Store at -80°C.

The product is shipped with ice packs. Upon receipt, store it immediately at -80°C

Storage Buffer:

PBS Only

For technical support and original validation data for this product please contact:

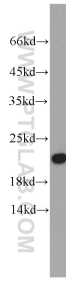
T: 4006900926

E: Proteintech-CN@ptglab.com

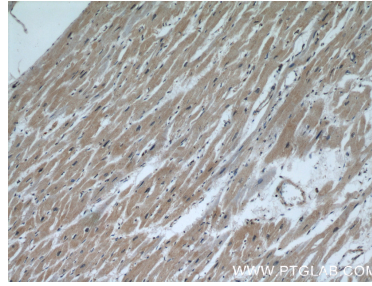
W: ptgcn.com

This product is exclusively available under Proteintech Group brand and is not available to purchase from any other manufacturer.

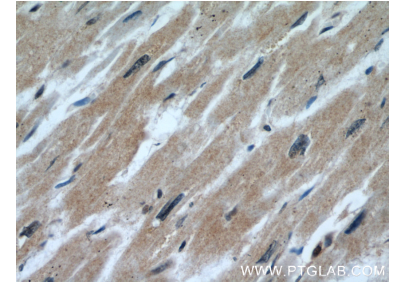
Selected Validation Data



human heart tissue were subjected to SDS PAGE followed by western blot with 22274-1-AP (CALML6 antibody) at dilution of 1:500 incubated at room temperature for 1.5 hours. This data was developed using the same antibody clone with 22274-1-PBS in a different storage buffer formulation.



Immunohistochemical analysis of paraffin-embedded human heart using 22274-1-AP (CALML6 antibody) at dilution of 1:50 (under 10x lens). This data was developed using the same antibody clone with 22274-1-PBS in a different storage buffer formulation.



Immunohistochemical analysis of paraffin-embedded human heart using 22274-1-AP (CALML6 antibody) at dilution of 1:50 (under 40x lens). This data was developed using the same antibody clone with 22274-1-PBS in a different storage buffer formulation.