

For Research Use Only

# CALML6 Polyclonal antibody

Catalog Number: 22274-1-AP

2 Publications



## Basic Information

Catalog Number:

22274-1-AP

Size:

600 ug/ml

Source:

Rabbit

Isotype:

IgG

GenBank Accession Number:

NM\_138705

GeneID (NCBI):

163688

UNIPROT ID:

Q8TD86

Full Name:

calmodulin-like 6

Calculated MW:

21 kDa

Observed MW:

21 kDa

Purification Method:

Antigen affinity purification

Recommended Dilutions:

WB 1:500-1:1000

IHC 1:20-1:200

## Applications

Tested Applications:

WB, IHC, ELISA

Cited Applications:

IHC

Species Specificity:

human, pig

Cited Species:

human

**Note-IHC: suggested antigen retrieval with TE buffer pH 9.0; (\*) Alternatively, antigen retrieval may be performed with citrate buffer pH 6.0**

Positive Controls:

WB : human heart tissue, pig heart tissue

IHC : human heart tissue, human prostate hyperplasia tissue

## Background Information

CALML6, also named as CAGLP, CALGP, belongs to the calmodulin family and Calglandulin subfamily. It contains 4 EF-hand domains. The antibody is specific to CALML6.

## Notable Publications

Author	Pubmed ID	Journal	Application
Caixia Cheng	39571661	Gene	IHC
Linjing Li	39155627	Technol Cancer Res Treat	IHC

## Storage

Storage:

Store at -20°C. Stable for one year after shipment.

Storage Buffer:

PBS with 0.02% sodium azide and 50% glycerol pH 7.3.

Aliquoting is unnecessary for -20°C storage

For technical support and original validation data for this product please contact:

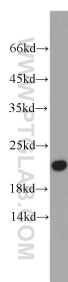
T: 4006900926

E: [Proteintech-CN@ptglab.com](mailto:Proteintech-CN@ptglab.com)

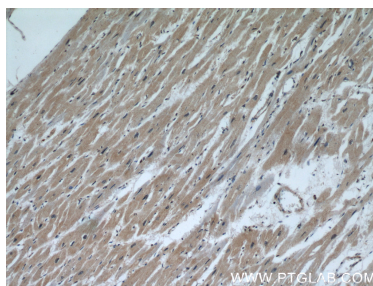
W: [ptgcn.com](http://ptgcn.com)

This product is exclusively available under Proteintech Group brand and is not available to purchase from any other manufacturer.

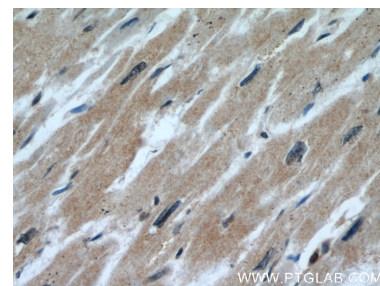
## Selected Validation Data



human heart tissue were subjected to SDS PAGE followed by western blot with 22274-1-AP (CALML6 antibody) at dilution of 1:500 incubated at room temperature for 1.5 hours.



Immunohistochemical analysis of paraffin-embedded human heart using 22274-1-AP (CALML6 antibody) at dilution of 1:50 (under 10x lens).



Immunohistochemical analysis of paraffin-embedded human heart using 22274-1-AP (CALML6 antibody) at dilution of 1:50 (under 40x lens).