

Polycystin 1 Polyclonal antibody

Catalog Number: 22263-1-AP

Basic Information

Catalog Number:

22263-1-AP

Size:

700 µg/ml

Source:

Rabbit

Isotype:

IgG

GenBank Accession Number:

NM_000296

GeneID (NCBI):

5310

UNIPROT ID:

P98161

Full Name:

polycystic kidney disease 1
(autosomal dominant)

Calculated MW:

463 kDa

Purification Method:

Antigen affinity purification

Recommended Dilutions:

IHC 1:50-1:500

Applications

Tested Applications:

IHC, ELISA

Species Specificity:

human, mouse

Note-IHC: suggested antigen retrieval with **TE buffer pH 9.0; (*) Alternatively, antigen retrieval may be performed with citrate buffer pH 6.0**

Positive Controls:

IHC : human liver tissue, mouse kidney tissue

Background Information

Polycystin 1 (PC1) is also named as PKD1, and Autosomal dominant polycystic kidney disease 1 protein, and belongs to the polycystin family. PKD1 and PKD2 are formed component of a heteromeric calcium-permeable ion channel. PKD1 is considered an orphan, atypical G protein coupled receptor complexed with TRPP2 (Polycystin 2 or PKD2), a Ca²⁺-permeable ion channel (PMID:27214281). PKD1 is involved in renal tubulogenesis (PMID:12482949).

Storage

Storage:

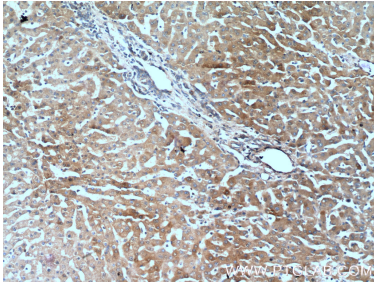
Store at -20°C. Stable for one year after shipment.

Storage Buffer:

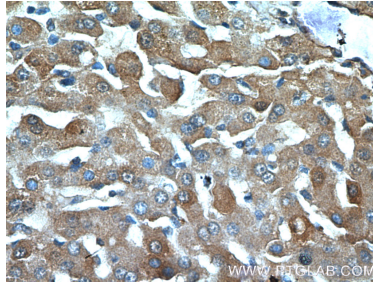
PBS with 0.02% sodium azide and 50% glycerol pH 7.3.

Aliquoting is unnecessary for -20°C storage

Selected Validation Data



Immunohistochemical analysis of paraffin-embedded human liver tissue slide using 22263-1-AP (Polycystin 1 antibody at dilution of 1:200 (under 10x lens).



Immunohistochemical analysis of paraffin-embedded human liver tissue slide using 22263-1-AP (Polycystin 1 antibody at dilution of 1:200 (under 40x lens).