

For Research Use Only

# ESPL1 Polyclonal antibody

Catalog Number: 22261-1-AP



## Basic Information

Catalog Number:

22261-1-AP

Concentration:

800 ug/ml

Source:

Rabbit

Isotype:

IgG

GenBank Accession Number:

NM\_012291

GeneID (NCBI):

9700

UNIPROT ID:

Q14674

Full Name:

extra spindle pole bodies homolog 1  
(S. cerevisiae)

Calculated MW:

233 kDa

Observed MW:

170 kDa

Purification Method:

Antigen affinity purification

Recommended Dilutions:

WB 1:500-1:1000

## Applications

Tested Applications:

WB, ELISA

Species Specificity:

human

Positive Controls:

WB : A431 cells, Jurkat cells, Raji cells

## Background Information

ESPL1 (Extra spindle poles-like 1 protein), also known as Separin, Separase, a cysteine endopeptidase, plays a vital role in the stable binding between sister chromatids before anaphase and their timely separation during anaphase, which is the key to chromosome inheritance (PMID: 34512713). ESPL1 expression is elevated and predicts poor outcomes in patients with various types of cancer, including breast cancer, glioma and endometrial cancer (PMID: 36465268). Full-length ESPL1 decreased after 30 min resulting in a ~ 170 kDa N-terminal (ESPL1N-term) and a ~ 60 kDa C-terminal polypeptide (ESPL1CC-term), reflecting ESPL1 activation and auto-cleavage (PMID: 30429481)

## Storage

Storage:

Store at -20°C. Stable for one year after shipment.

Storage Buffer:

PBS with 0.02% sodium azide and 50% glycerol, pH7.3

Aliquoting is unnecessary for -20°C storage

For technical support and original validation data for this product please contact:

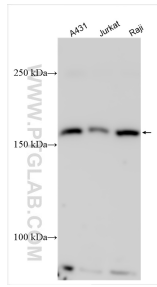
T: 4006900926

E: [Proteintech-CN@ptglab.com](mailto:Proteintech-CN@ptglab.com)

W: [ptgcn.com](http://ptgcn.com)

This product is exclusively available under Proteintech Group brand and is not available to purchase from any other manufacturer.

## Selected Validation Data



Various lysates were subjected to SDS PAGE followed by western blot with 22261-1-AP (ESPL1 antibody) at dilution of 1:800 incubated at room temperature for 1.5 hours.