

For Research Use Only

# PAX8 Polyclonal antibody

Catalog Number: 22255-1-AP



## Basic Information

<b>Catalog Number:</b> 22255-1-AP	<b>GenBank Accession Number:</b> BC001060	<b>Purification Method:</b> Antigen affinity purification
<b>Size:</b> N/A	<b>GeneID (NCBI):</b> 7849	
<b>Source:</b> Rabbit	<b>UNIPROT ID:</b> Q06710	
<b>Isotype:</b> IgG	<b>Full Name:</b> paired box 8	
<b>Immunogen Catalog Number:</b> AG17759	<b>Calculated MW:</b> 450 aa, 48 kDa	

## Applications

**Tested Applications:**  
WB, ELISA

**Species Specificity:**  
human

## Background Information

PAX8 is a member of the paired box (PAX) family of transcription factors, typically containing a paired box domain and a paired-type homeodomain. It is expressed during organogenesis of the thyroid gland, kidney and Mullerian system. It is thought to regulate the expression of Wilms tumor suppressor (WT1) gene and mutations in PAX8 have been associated with Wilms tumor cells, thyroid and ovarian carcinomas. PAX8 is a useful marker in distinguishing ovarian carcinomas from mammary carcinomas (PMID: 18724243). PAX8 is expressed in a high percentage of ovarian serous, endometrioid, and clear cell carcinomas, but only rarely in primary ovarian mucinous adenocarcinomas.

PAX8 has 5 isoforms with calculated MW 31kd, 34kd, 41kd, 43kd and 48kd. And there is a 60kd band corresponding to the electrophoretic mobility of PAX8 (PMID:15650356). Proteintech's 10336-1-AP antibody has cross-reactivities with the other PAX family members.

## Storage

**Storage:**  
Store at -20°C. Stable for one year after shipment.

**Storage Buffer:**  
PBS with 0.02% sodium azide and 50% glycerol pH 7.3.

Aliquoting is unnecessary for -20°C storage

For technical support and original validation data for this product please contact:

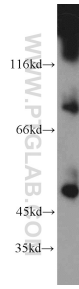
T: 4006900926

E: [Proteintech-CN@ptglab.com](mailto:Proteintech-CN@ptglab.com)

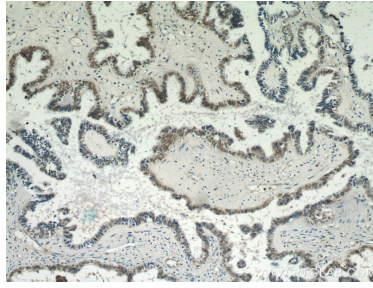
W: [ptgcn.com](http://ptgcn.com)

**This product is exclusively available under Proteintech Group brand and is not available to purchase from any other manufacturer.**

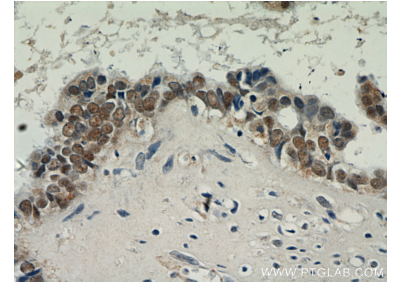
## Selected Validation Data



A2780 cells were subjected to SDS PAGE followed by western blot with 22255-1-AP (PAX8 antibody) at dilution of 1:1000 incubated at room temperature for 1.5 hours.



Immunohistochemical analysis of paraffin-embedded human ovary tumor using 22255-1-AP (PAX8 antibody) at dilution of 1:100 (under 10x lens).



Immunohistochemical analysis of paraffin-embedded human ovary tumor using 22255-1-AP (PAX8 antibody) at dilution of 1:100 (under 40x lens).