

For Research Use Only

TLR6 Polyclonal antibody, PBS Only

Catalog Number: 22240-1-PBS

Featured Product



Basic Information

Catalog Number:

22240-1-PBS

Source:

Rabbit

Isotype:

IgG

Immunogen Catalog Number:

AG17686

GenBank Accession Number:

BC111755

GeneID (NCBI):

10333

UNIPROT ID:

Q9Y2C9

Full Name:

toll-like receptor 6

Calculated MW:

480 aa, 56 kDa

Observed MW:

95-110 kDa

Purification Method:

Antigen affinity purification

Applications

Tested Applications:

WB, Indirect ELISA

Species Specificity:

human, mouse, rat

Background Information

TLR6, also known as CD286, belongs to the Toll-like receptor (TLR) family, which is important in the innate immune response to pathogens. TLRs are highly conserved from Drosophila to humans and share structural and functional similarities. TLR6 can form a heterodimer with TLR2. TLR6 and TLR2 are recruited to the macrophage phagosome, where they recognize peptidoglycan, a Gram-positive pathogen component (PMID: 11095740). TLR6 interacts with CD36, following CD36 stimulation by oxLDL or amyloid-beta 42, and forms a heterodimer with TLR4. The trimeric complex is internalized and triggers an inflammatory response.

Storage

Storage:

Store at -80°C.

The product is shipped with ice packs. Upon receipt, store it immediately at -80°C

Storage Buffer:

PBS only, pH7.3

For technical support and original validation data for this product please contact:

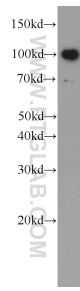
T: 4006900926

E: Proteintech-CN@ptglab.com

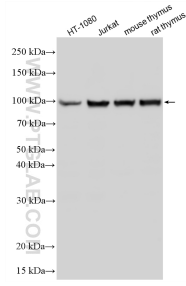
W: ptgcn.com

This product is exclusively available under Proteintech Group brand and is not available to purchase from any other manufacturer.

Selected Validation Data



RAW 264.7 cells were subjected to SDS PAGE followed by western blot with 22240-1-AP (TLR6 antibody) at dilution of 1:1000 incubated at room temperature for 1.5 hours. This data was developed using the same antibody clone with 22240-1-PBS in a different storage buffer formulation.



Various lysates were subjected to SDS PAGE followed by western blot with 22240-1-AP (TLR6 antibody) at dilution of 1:1000 incubated at room temperature for 1.5 hours. This data was developed using the same antibody clone with 22240-1-PBS in a different storage buffer formulation.