

For Research Use Only

# ADAM28 Polyclonal antibody

Catalog Number: 22234-1-AP

Featured Product

6 Publications



## Basic Information

Catalog Number:

22234-1-AP

Size:

1000 ug/ml

Source:

Rabbit

Isotype:

IgG

Immunogen Catalog Number:

AG17586

GenBank Accession Number:

BC136478

GeneID (NCBI):

10863

UNIPROT ID:

Q9UKQ2

Full Name:

ADAM metallopeptidase domain 28

Calculated MW:

775 aa, 87 kDa

Observed MW:

35 kDa

Purification Method:

Antigen affinity purification

Recommended Dilutions:

WB 1:500-1:1000

IP 0.5-4.0 ug for 1.0-3.0 mg of total protein lysate

## Applications

Tested Applications:

WB, IP, ELISA

Cited Applications:

WB

Species Specificity:

human, mouse

Cited Species:

human, mouse

Positive Controls:

WB : mouse lung tissue, BxPC-3 cells, PC-13 cells, mouse spleen tissue

IP : mouse lung tissue,

## Background Information

ADAM28 belongs to a family of cell surface and secreted glycoproteins that possess both proteolytic and adhesive properties. ADAM28 is predominantly expressed by carcinoma cells in the breast carcinoma tissues as protein bands of 42 kDa and 55/57 kDa, which correspond to the active forms of ADAM28s and ADAM28m, respectively. In human non-small cell lung carcinomas and breast carcinomas, ADAM28 is overexpressed predominantly by carcinoma cells, and the expression correlates with carcinoma cell proliferation and lymph node metastasis (PMID:19601836).

## Notable Publications

Author	Pubmed ID	Journal	Application
Zhen-Huang Chen	32918999	Mol Cell Neurosci	WB
Jia-Min Zhang	30429106	Cancer Lett	WB
Daiji Kiyozumi	38346723	J Reprod Dev	WB

## Storage

Storage:

Store at -20°C. Stable for one year after shipment.

Storage Buffer:

PBS with 0.02% sodium azide and 50% glycerol pH 7.3.

Aliquoting is unnecessary for -20°C storage

For technical support and original validation data for this product please contact:

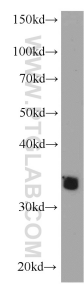
T: 4006900926

E: [Proteintech-CN@ptglab.com](mailto:Proteintech-CN@ptglab.com)

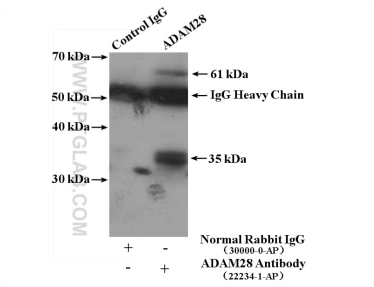
W: [ptgcn.com](http://ptgcn.com)

This product is exclusively available under Proteintech Group brand and is not available to purchase from any other manufacturer.

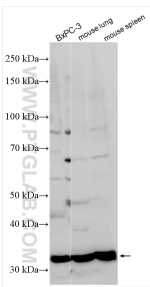
Selected Validation Data



mouse lung tissue were subjected to SDS PAGE followed by western blot with 22234-1-AP (ADAM28 antibody) at dilution of 1:800 incubated at room temperature for 1.5 hours.



IP result of anti-ADAM28 (IP:22234-1-AP, 4ug; Detection:22234-1-AP 1:800) with mouse lung tissue lysate 3600ug.



Various lysates were subjected to SDS PAGE followed by western blot with 22234-1-AP (ADAM28 antibody) at dilution of 1:1000 incubated at room temperature for 1.5 hours.