

For Research Use Only

KIRREL Polyclonal antibody

Catalog Number: 22232-1-AP



Basic Information

Catalog Number:

22232-1-AP

Size:

600 ug/ml

Source:

Rabbit

Isotype:

IgG

Immunogen Catalog Number:

AG17578

GenBank Accession Number:

BC109192

GeneID (NCBI):

55243

UNIPROT ID:

Q96J84

Full Name:

kin of IRRE like (Drosophila)

Calculated MW:

757 aa, 84 kDa

Observed MW:

72 kDa

Purification Method:

Antigen affinity purification

Recommended Dilutions:

WB 1:500-1:3000

IF-P 1:50-1:500

Applications

Tested Applications:

WB, ELISA

Species Specificity:

human, mouse, rat

Positive Controls:

WB : C2C12 cells, mouse brain tissue, mouse kidney tissue, mouse lung tissue, rat brain tissue

IF-P : mouse kidney tissue,

Background Information

Kin of IRRE protein (KIRREL), also known as NEPH1, is a member of a podocin-binding protein family. KIRREL is a component of the podocyte slit diaphragm, which serves as the structural framework of the glomerular filtration barrier. KIRREL has three isoforms with molecular weights of 85 kDa, 83 kDa, and 72 kDa.

Storage

Storage:

Store at -20°C. Stable for one year after shipment.

Storage Buffer:

PBS with 0.02% sodium azide and 50% glycerol pH 7.3.

Aliquoting is unnecessary for -20°C storage

For technical support and original validation data for this product please contact:

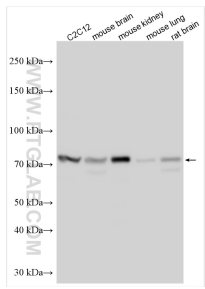
T: 4006900926

E: Proteintech-CN@ptglab.com

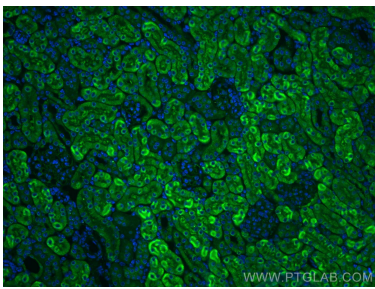
W: ptgcn.com

This product is exclusively available under Proteintech Group brand and is not available to purchase from any other manufacturer.

Selected Validation Data



Various lysates were subjected to SDS PAGE followed by western blot with 22232-1-AP (KIRREL antibody) at dilution of 1:1500 incubated at room temperature for 1.5 hours.



Immunofluorescent analysis of (4% PFA) fixed paraffin-embedded mouse kidney tissue using KIRREL antibody (22232-1-AP) at dilution of 1:200 and CoraLite®488-Conjugated AffiniPure Goat Anti-Rabbit IgG(H+L) (SA00013-2). Heat mediated antigen retrieval with Tris-EDTA buffer (pH 9.0).