

For Research Use Only

# HIP1 Polyclonal antibody

Catalog Number: 22231-1-AP

Featured Product

3 Publications



## Basic Information

### Catalog Number:

22231-1-AP

### Size:

850 µg/ml

### Source:

Rabbit

### Isotype:

IgG

### Immunogen Catalog Number:

AG17576

### GenBank Accession Number:

BC110545

### GeneID (NCBI):

3092

### UNIPROT ID:

O00291

### Full Name:

huntingtin interacting protein 1

### Calculated MW:

1037 aa, 116 kDa

### Observed MW:

116 kDa

### Purification Method:

Antigen Affinity purified

### Recommended Dilutions:

WB 1:1000-1:5000

IP 0.5-4.0 µg for 1.0-3.0 mg of total protein lysate

IHC 1:50-1:500

IF/ICC 1:50-1:500

## Applications

### Tested Applications:

WB, IP, IF/ICC, IHC, ELISA

### Cited Applications:

WB, IHC

### Species Specificity:

human, mouse

### Cited Species:

human

**Note-IHC: suggested antigen retrieval with TE buffer pH 9.0; (\*) Alternatively, antigen retrieval may be performed with citrate buffer pH 6.0**

### Positive Controls:

**WB** : DU 145 cells, PC-3 cells, human brain tissue, A549 cells, HeLa cells

**IP** : HeLa cells,

**IHC** : human prostate cancer tissue, human brain tissue, human colon cancer tissue, mouse brain tissue

**IF/ICC** : A549 cells,

## Background Information

### Notable Publications

Author	Pubmed ID	Journal	Application
Ying Sun	33363616	Oncol Lett	WB, IHC
Basak Icli	30668922	FASEB J	WB
Ping Lan	37994157	Acta Biochim Biophys Sin (Shanghai)	WB

## Storage

### Storage:

Store at -20°C. Stable for one year after shipment.

### Storage Buffer:

PBS with 0.02% sodium azide and 50% glycerol pH 7.3.

Aliquoting is unnecessary for -20°C storage

For technical support and original validation data for this product please contact:

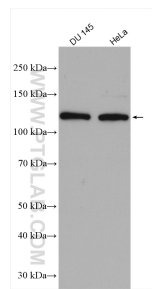
T: 4006900926

E: [Proteintech-CN@ptglab.com](mailto:Proteintech-CN@ptglab.com)

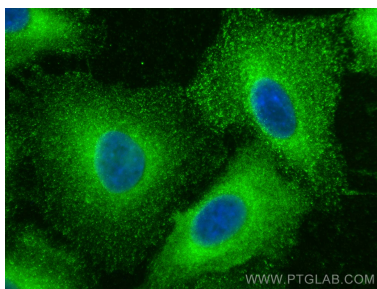
W: [ptgcn.com](http://ptgcn.com)

**This product is exclusively available under Proteintech Group brand and is not available to purchase from any other manufacturer.**

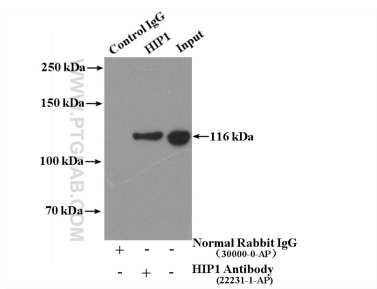
Selected Validation Data



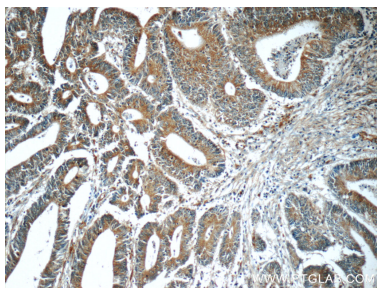
Various lysates were subjected to SDS PAGE followed by western blot with 22231-1-AP (HIP1 antibody) at dilution of 1:5000 incubated at room temperature for 1.5 hours.



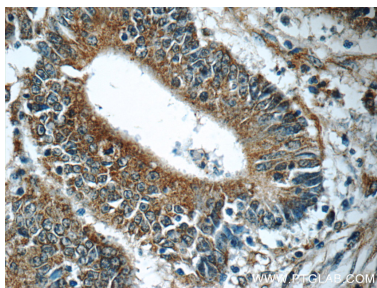
Immunofluorescent analysis of (-20°C Methanol) fixed A549 cells using HIP1 antibody (22231-1-AP) at dilution of 1:200 and CoraLite®488-Conjugated AffiniPure Goat Anti-Rabbit IgG(H+L) (SA00013-2).



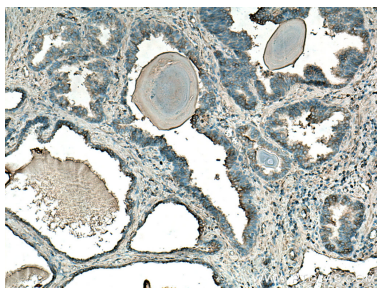
IP result of anti-HIP1 (IP:22231-1-AP, 4ug; Detection:22231-1-AP 1:1000) with HeLa cells lysate 2500ug.



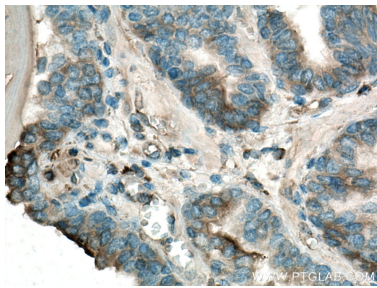
Immunohistochemical analysis of paraffin-embedded human colon cancer tissue slide using 22231-1-AP (HIP1 Antibody) at dilution of 1:50 (under 10x lens).



Immunohistochemical analysis of paraffin-embedded human colon cancer tissue slide using 22231-1-AP (HIP1 Antibody) at dilution of 1:50 (under 40x lens).



Immunohistochemical analysis of paraffin-embedded human prostate cancer tissue slide using 22231-1-AP (HIP1 antibody) at dilution of 1:200 (under 10x lens). Heat mediated antigen retrieval with Tris-EDTA buffer (pH 9.0).



Immunohistochemical analysis of paraffin-embedded human prostate cancer tissue slide using 22231-1-AP (HIP1 antibody) at dilution of 1:200 (under 40x lens). Heat mediated antigen retrieval with Tris-EDTA buffer (pH 9.0).