

For Research Use Only

# TIMM50 Polyclonal antibody

Catalog Number: 22229-1-AP

14 Publications



## Basic Information

Catalog Number:

22229-1-AP

Concentration:

500 ug/ml

Source:

Rabbit

Isotype:

IgG

Immunogen Catalog Number:

AG17574

GenBank Accession Number:

BC121147

GeneID (NCBI):

92609

UNIPROT ID:

Q3ZCQ8

Full Name:

translocase of inner mitochondrial membrane 50 homolog (S. cerevisiae)

Calculated MW:

456 aa, 50 kDa

Observed MW:

35-40 kDa

Purification Method:

Antigen Affinity purified

Recommended Dilutions:

WB: 1:1000-1:6000

IP: 0.5-4.0 ug for 1.0-3.0 mg of total protein lysate

IHC: 1:20-1:200

IF/ICC: 1:50-1:500

## Applications

Tested Applications:

WB, IHC, IF/ICC, IP, ELISA

Cited Applications:

WB, IF, IP, RIP

Species Specificity:

human, mouse

Cited Species:

human, mouse

**Note-IHC: suggested antigen retrieval with *TE buffer pH 9.0*; (\*) Alternatively, antigen retrieval may be performed with *citrate buffer pH 6.0***

Positive Controls:

WB : HEK-293 cells,

IP : HeLa cells,

IHC : human kidney tissue, human liver tissue

IF/ICC : HepG2 cells,

## Background Information

### Notable Publications

Author	Pubmed ID	Journal	Application
Anna Klucnika	36355348	J Cell Biol	WB
Maxence Le Vasseur	34034859	Elife	WB
Zhuzhu Guan	32130753	Cell Prolif	WB, RIP

## Storage

Storage:

Store at -20°C. Stable for one year after shipment.

Storage Buffer:

PBS with 0.02% sodium azide and 50% glycerol, pH7.3

Aliquoting is unnecessary for -20°C storage

For technical support and original validation data for this product please contact:

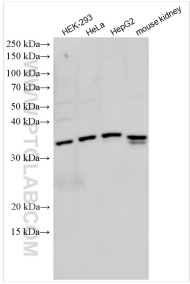
T: 4006900926

E: [Proteintech-CN@ptglab.com](mailto:Proteintech-CN@ptglab.com)

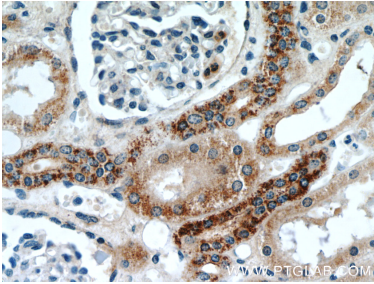
W: [ptgcn.com](http://ptgcn.com)

This product is exclusively available under Proteintech Group brand and is not available to purchase from any other manufacturer.

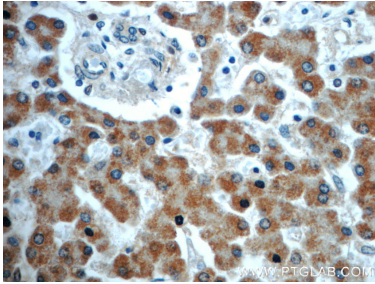
# Selected Validation Data



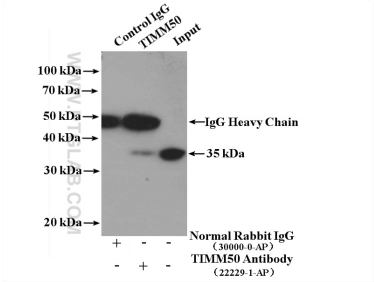
Various lysates were subjected to SDS PAGE followed by western blot with 22229-1-AP (TIMM50 antibody) at dilution of 1:3000 incubated at room temperature for 1.5 hours.



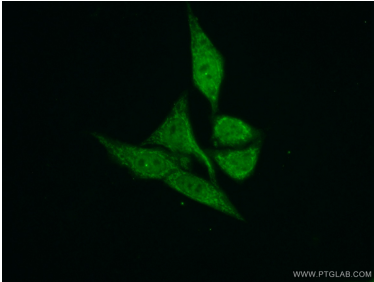
Immunohistochemical analysis of paraffin-embedded human kidney slide using 22229-1-AP (TIMM50 Antibody) at dilution of 1:50.



Immunohistochemical analysis of paraffin-embedded human liver slide using 22229-1-AP (TIMM50 Antibody) at dilution of 1:50.



IP result of anti-TIMM50 (IP:22229-1-AP, 4ug; Detection:22229-1-AP 1:1000) with HeLa cells lysate 3200ug.



Immunofluorescent analysis of (10% Formaldehyde) fixed HepG2 cells using 22229-1-AP (TIMM50 antibody) at dilution of 1:50 and Alexa Fluor 488-conjugated AffiniPure Goat Anti-Rabbit IgG(H+L).