

For Research Use Only

# CEP164 Polyclonal antibody

Catalog Number: 22227-1-AP

Featured Product

65 Publications



## Basic Information

### Catalog Number:

22227-1-AP

### Concentration:

1000 ug/ml

### Source:

Rabbit

### Isotype:

IgG

### Immunogen Catalog Number:

AG17570

### GenBank Accession Number:

BC000602

### GeneID (NCBI):

22897

### UNIPROT ID:

Q9UPVO

### Full Name:

centrosomal protein 164kDa

### Calculated MW:

1460 aa, 164 kDa

### Observed MW:

164 kDa

### Purification Method:

Antigen affinity purification

### Recommended Dilutions:

WB 1:200-1:1000

IP 0.5-4.0 ug for 1.0-3.0 mg of total protein lysate

IHC 1:100-1:1000

IF/ICC 1:200-1:800

## Applications

### Tested Applications:

WB, IHC, IF/ICC, IP, ELISA

### Cited Applications:

WB, IHC, IF, IP

### Species Specificity:

human, canine

### Cited Species:

human, mouse

### Positive Controls:

WB : HEK-293 cells,

IP : RPE1 cells,

IHC : human colon tissue, human cervical cancer tissue

IF/ICC : HeLa cells, A549 cells, PC-3 cells, MDCK cells, hTERT-RPE1 cells

**Note-IHC: suggested antigen retrieval with TE buffer pH 9.0; (\*) Alternatively, antigen retrieval may be performed with citrate buffer pH 6.0**

## Background Information

CEP164, also called KIAA1052 or NPHP15, is a 1460 amino acid protein containing 1 WW domain. CEP164 localizes in the microtubule organizing center and is expressed in several cell lines. CEP164 plays a role in microtubule organization and/or maintenance for the formation of primary cilia, a microtubule-based structure that protrudes from the surface of epithelial cells. CEP164 plays a critical role in the G2/M checkpoint and nuclear divisions. The expression of CEP164 is normally limited to the mother centriole, and CEP164 can be used as a useful marker for mother centriole.

## Notable Publications

Author	Pubmed ID	Journal	Application
Ana Martin-Hurtado	31554934	Sci Rep	IF
Marine H Laporte	36125182	EMBO J	IF
Louise A Stephen	26386247	Elife	IF

## Storage

### Storage:

Store at -20°C. Stable for one year after shipment.

### Storage Buffer:

PBS with 0.02% sodium azide and 50% glycerol pH 7.3.

Aliquoting is unnecessary for -20°C storage

For technical support and original validation data for this product please contact:

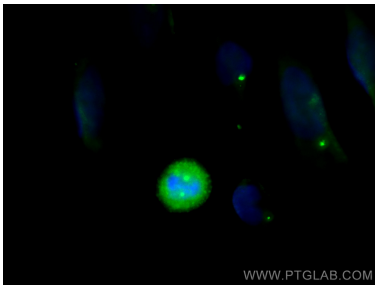
T: 4006900926

E: [Proteintech-CN@ptglab.com](mailto:Proteintech-CN@ptglab.com)

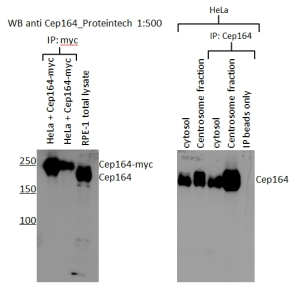
W: [ptgcn.com](http://ptgcn.com)

**This product is exclusively available under Proteintech Group brand and is not available to purchase from any other manufacturer.**

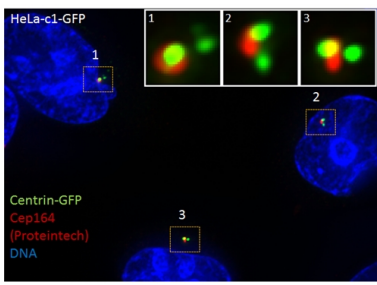
Selected Validation Data



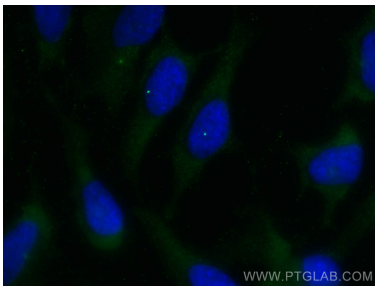
Immunofluorescent analysis of (-20°C Methanol) fixed HeLa cells using CEP164 antibody (22227-1-AP) at dilution of 1:400 and CoraLite®488-Conjugated AffiniPure Goat Anti-Rabbit IgG(H+L).



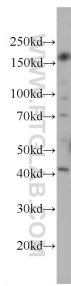
WB results of CEP164 (22227-1-AP, 1:500) with RPE1 cells by Laboratory of Protein Dynamics and Signaling; Center for Cancer Research, National Cancer Institute.



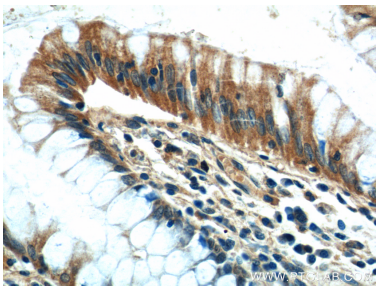
IF results of CEP164 (22227-1-AP, 1:1000) with HeLa cells (1.5% formaldehyde, 10 min RT) by Laboratory of Protein Dynamics and Signaling; Center for Cancer Research, National Cancer Institute.



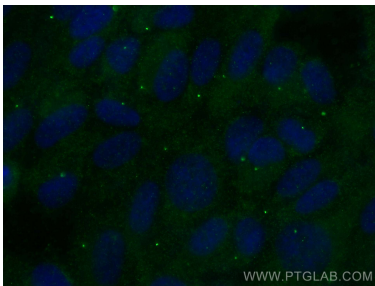
Immunofluorescent analysis of (-20°C Methanol) fixed HeLa cells using CEP164 antibody (22227-1-AP) at dilution of 1:200 and CoraLite®488-Conjugated AffiniPure Goat Anti-Rabbit IgG(H+L).



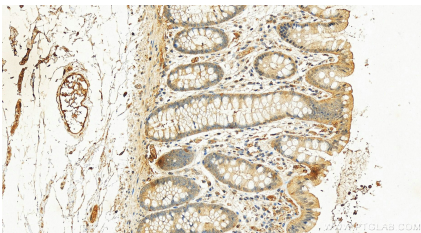
HEK-293 cells were subjected to SDS PAGE followed by western blot with 22227-1-AP (CEP164 Antibody) at dilution of 1:300 incubated at room temperature for 1.5 hours.



Immunohistochemical analysis of paraffin-embedded human colon tissue slide using 22227-1-AP (CEP164 Antibody) at dilution of 1:50 (under 40x lens).



Immunofluorescent analysis of (-20°C Ethanol) fixed hTERT-RPE1 cells using CEP164 antibody (22227-1-AP) at dilution of 1:200 and CoraLite®488-Conjugated AffiniPure Goat Anti-Rabbit IgG(H+L).



Immunohistochemical analysis of paraffin-embedded human normal colon slide using 22227-1-AP (CEP164 antibody) at dilution of 1:1000 (under 20x lens). Heat mediated antigen retrieval with Tris-EDTA buffer (pH 9.0).