

For Research Use Only

# CSE1L Polyclonal antibody

Catalog Number: 22219-1-AP

Featured Product

10 Publications



## Basic Information

### Catalog Number:

22219-1-AP

### Size:

350 µg/ml

### Source:

Rabbit

### Isotype:

IgG

### Immunogen Catalog Number:

AG17556

### GenBank Accession Number:

BC109313

### GeneID (NCBI):

1434

### UNIPROT ID:

P55060

### Full Name:

CSE1 chromosome segregation 1-like (yeast)

### Calculated MW:

971 aa, 110 kDa

### Observed MW:

100-110 kDa

### Purification Method:

Antigen affinity purification

### Recommended Dilutions:

WB 1:1000-1:4000

IP 0.5-4.0 µg for 1.0-3.0 mg of total protein lysate

IHC 1:50-1:500

## Applications

### Tested Applications:

WB, IP, IHC, ELISA

### Cited Applications:

WB, IHC, IF

### Species Specificity:

human, mouse

### Cited Species:

human, mouse

**Note-IHC: suggested antigen retrieval with TE buffer pH 9.0; (\*) Alternatively, antigen retrieval may be performed with citrate buffer pH 6.0**

### Positive Controls:

**WB** : HEK-293 cells, HeLa cells, Jurkat cells, mouse testis tissue, RAW264.7, MCF-7 cells, Ramos cells, NIH/3T3 cells

**IP** : HEK-293 cells,

**IHC** : human placenta tissue, mouse testis tissue

## Background Information

CSE1L (Chromosome Segregation 1-Like) is located on 20q13.13, and encodes a 971-amino-acid protein. It associates with microtubules and mitotic spindles, and is also considered to have a role in tumor progression. The CSE1L protein includes a nuclear localization signal allowing for transport into the nucleus via the importin- $\alpha$ /beta heterodimer. In addition, CSE1L plays roles in cell proliferation and apoptosis.

## Notable Publications

Author	Pubmed ID	Journal	Application
Chiara Bellio	35626166	Cancers (Basel)	WB
Joseph Hiatt	33979618	Cell Rep	WB
Xiao Zhang	33854580	J Cancer	WB

## Storage

### Storage:

Store at -20°C. Stable for one year after shipment.

### Storage Buffer:

PBS with 0.02% sodium azide and 50% glycerol pH 7.3.

Aliquoting is unnecessary for -20°C storage

For technical support and original validation data for this product please contact:

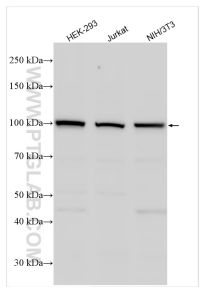
T: 4006900926

E: [Proteintech-CN@ptglab.com](mailto:Proteintech-CN@ptglab.com)

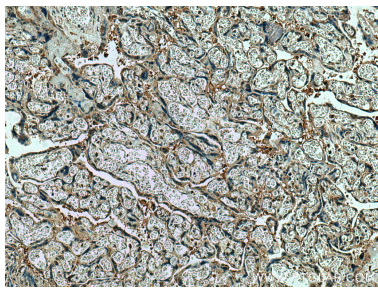
W: [ptgcn.com](http://ptgcn.com)

This product is exclusively available under Proteintech Group brand and is not available to purchase from any other manufacturer.

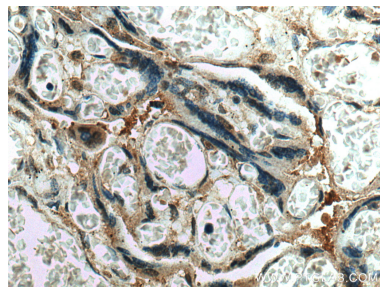
Selected Validation Data



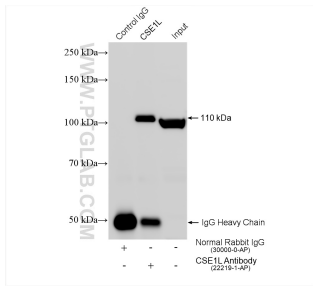
Various lysates were subjected to SDS PAGE followed by western blot with 22219-1-AP (CSE1L antibody) at dilution of 1:2000 incubated at room temperature for 1.5 hours.



Immunohistochemical analysis of paraffin-embedded human placenta tissue slide using 22219-1-AP (CSE1L antibody) at dilution of 1:200 (under 10x lens). Heat mediated antigen retrieval with Tris-EDTA buffer (pH 9.0).



Immunohistochemical analysis of paraffin-embedded human placenta tissue slide using 22219-1-AP (CSE1L antibody) at dilution of 1:200 (under 40x lens). Heat mediated antigen retrieval with Tris-EDTA buffer (pH 9.0).



IP result of anti-CSE1L (IP:22219-1-AP, 4ug; Detection:22219-1-AP 1:2000) with HEK-293 cells lysate 1400 ug.