

For Research Use Only

ADAM19 Polyclonal antibody, PBS Only

Catalog Number: 22216-1-PBS



Basic Information

Catalog Number:

22216-1-PBS

Concentration:

1 mg/ml

Source:

Rabbit

Isotype:

IgG

Immunogen Catalog Number:

AG17544

GenBank Accession Number:

BC024214

GeneID (NCBI):

8728

UNIPROT ID:

Q9H013

Full Name:

ADAM metallopeptidase domain 19
(meltrin beta)

Calculated MW:

955 aa, 105 kDa

Observed MW:

105 kDa

Purification Method:

Antigen affinity purification

Applications

Tested Applications:

WB, Indirect ELISA

Species Specificity:

human, mouse, rat

Background Information

Meltrin β (ADAM19) is a metalloprotease-disintegrin expressed in the peripheral nervous system and other organs during embryogenesis. Its specific patterns of expression during embryogenesis suggest that it is involved in the development of the peripheral nervous system, skeletal muscle, bone and heart tissue (PMID:12482604). It participates in the proteolytic processing of beta-type neuregulin isoforms which are involved in neurogenesis and synaptogenesis, suggesting a regulatory role in glial cell.

Storage

Storage:

Store at -80°C .

The product is shipped with ice packs. Upon receipt, store it immediately at -80°C

Storage Buffer:

PBS only, pH7.3

For technical support and original validation data for this product please contact:

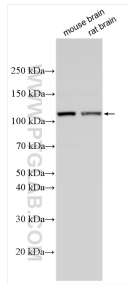
T: 4006900926

E: Proteintech-CN@ptglab.com

W: ptgcn.com

This product is exclusively available under Proteintech Group brand and is not available to purchase from any other manufacturer.

Selected Validation Data



Various lysates were subjected to SDS PAGE followed by western blot with 22216-1-AP (ADAM19 antibody) at dilution of 1:500 incubated at room temperature for 1.5 hours. This data was developed using the same antibody clone with 22216-1-PBS in a different storage buffer formulation.