

For Research Use Only

# Kindlin 1 Polyclonal antibody

Catalog Number: 22215-1-AP

Featured Product

7 Publications



## Basic Information

### Catalog Number:

22215-1-AP

### Size:

400 µg/ml

### Source:

Rabbit

### Isotype:

IgG

### Immunogen Catalog Number:

AG17543

### GenBank Accession Number:

BC035882

### GeneID (NCBI):

55612

### UNIPROT ID:

Q9BQL6

### Full Name:

fermitin family homolog 1  
(Drosophila)

### Calculated MW:

677 aa, 77 kDa

### Observed MW:

70-77 kDa

### Purification Method:

Antigen affinity purification

### Recommended Dilutions:

WB 1:300-1:1000

IHC 1:50-1:500

IF/ICC 1:10-1:100

## Applications

### Tested Applications:

WB, IHC, IF/ICC, ELISA

### Cited Applications:

WB, IHC, IF

### Species Specificity:

human, mouse

### Cited Species:

human, mouse, rat

**Note-IHC: suggested antigen retrieval with TE buffer pH 9.0; (\*) Alternatively, antigen retrieval may be performed with citrate buffer pH 6.0**

### Positive Controls:

**WB** : mouse kidney tissue, COLO 320 cells, HEK-293 cells

**IHC** : human colon cancer tissue, human pancreas tissue, human pancreas cancer tissue

**IF/ICC** : HEK-293 cells,

## Background Information

Kindlin-1 is a FERM domain containing adaptor protein that is found predominantly at cell-extracellular matrix adhesions where it binds to  $\beta$ -integrin subunits and is required for integrin activation. Loss of function mutations in the FERMT1 gene which encodes Kindlin-1 leads to the development of Kindler Syndrome (KS) an autosomal recessive skin disorder characterized by skin blistering, photosensitivity, and predisposition to aggressive squamous cell carcinoma (SCC).

## Notable Publications

Author	Pubmed ID	Journal	Application
Baisong Zhao	34618385	Eur J Neurosci	WB
Congcong Shen	28290610	Int J Mol Med	IHC, IF
Lingling Li	35144617	Cancer Cell Int	WB, IHC

## Storage

### Storage:

Store at -20°C. Stable for one year after shipment.

### Storage Buffer:

PBS with 0.02% sodium azide and 50% glycerol pH 7.3.

Aliquoting is unnecessary for -20°C storage

For technical support and original validation data for this product please contact:

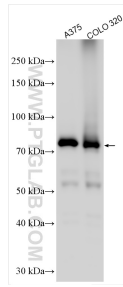
T: 4006900926

E: [Proteintech-CN@ptglab.com](mailto:Proteintech-CN@ptglab.com)

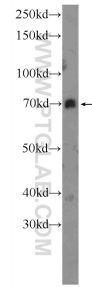
W: [ptgcn.com](http://ptgcn.com)

**This product is exclusively available under Proteintech Group brand and is not available to purchase from any other manufacturer.**

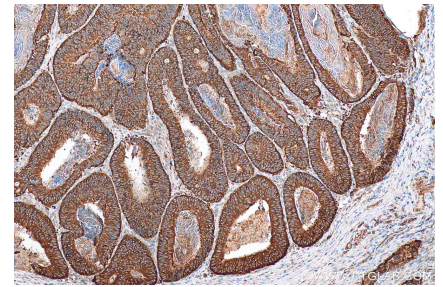
## Selected Validation Data



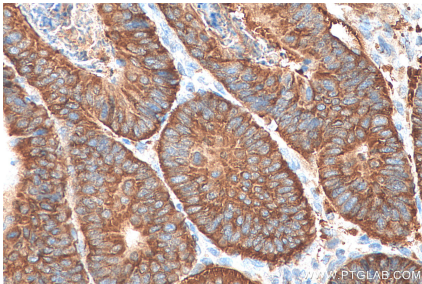
Various lysates were subjected to SDS PAGE followed by western blot with 22215-1-AP (Kindlin 1 antibody) at dilution of 1:2000 incubated at room temperature for 1.5 hours.



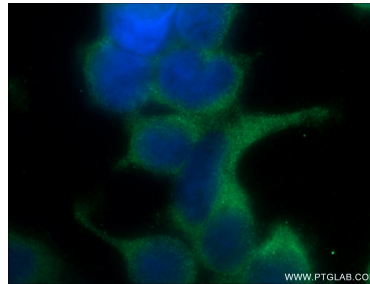
mouse kidney tissue were subjected to SDS PAGE followed by western blot with 22215-1-AP (FERMT1 Antibody) at dilution of 1:300 incubated at room temperature for 1.5 hours.



Immunohistochemical analysis of paraffin-embedded human colon cancer tissue slide using 22215-1-AP (Kindlin 1 antibody) at dilution of 1:200 (under 10x lens). Heat mediated antigen retrieval with Tris-EDTA buffer (pH 9.0).



Immunohistochemical analysis of paraffin-embedded human colon cancer tissue slide using 22215-1-AP (Kindlin 1 antibody) at dilution of 1:200 (under 40x lens). Heat mediated antigen retrieval with Tris-EDTA buffer (pH 9.0).



Immunofluorescent analysis of HEK-293 cells using 22215-1-AP (FERMT1 antibody) at dilution of 1:25 and Alexa Fluor 488-conjugated Goat Anti-Rabbit IgG(H+L).