

For Research Use Only

# ERC1 Polyclonal antibody

Catalog Number: 22211-1-AP

Featured Product

5 Publications



## Basic Information

Catalog Number:

22211-1-AP

Concentration:

600 ug/ml

Source:

Rabbit

Isotype:

IgG

Immunogen Catalog Number:

AG17536

GenBank Accession Number:

BC132782

GeneID (NCBI):

23085

UNIPROT ID:

Q8IUD2

Full Name:

ELKS/RAB6-interacting/CAST family member 1

Calculated MW:

1116 aa, 128 kDa

Observed MW:

124-135 kDa

Purification Method:

Antigen affinity purification

Recommended Dilutions:

WB 1:500-1:2000

IHC 1:50-1:500

IF/ICC 1:200-1:800

## Applications

Tested Applications:

WB, IHC, IF/ICC, ELISA

Cited Applications:

WB, IF, CoIP

Species Specificity:

human

Cited Species:

human, rat

**Note-IHC: suggested antigen retrieval with TE buffer pH 9.0; (\*) Alternatively, antigen retrieval may be performed with citrate buffer pH 6.0**

Positive Controls:

WB : HeLa cells, COLO 320 cells, human testis tissue, Jurkat cells

IHC : mouse kidney tissue,

IF/ICC : HUVEC cells,

## Background Information

ERC is an acronym based on previous separate namings of members of this protein family, ELKS, Rab6IP2 and CAST (PMID: 12391317). They are known to bind RIMs, the active zone proteins that regulate neurotransmitter release. ERC1 (ELKS) is an essential regulatory subunit of the IKK complex and likely functions by recruiting I $\kappa$ B $\alpha$  to the complex (PMID: 15218148). Multiple isoforms of ERC1 mRNA are generated by alternative splicing (PMID: 12203787). There are two known splice variants of ERC1 protein that differ at their C termini, ERC1a and ERC1b. ERC1a is ubiquitously expressed, whereas ERC1b is brain-specific (PMID: 12391317; 12923177).

## Notable Publications

Author	Pubmed ID	Journal	Application
Qingyang Liu	29044157	Sci Rep	WB
Lou Fourriere	31142554	J Cell Biol	IF
Ivar Noordstra	35006275	J Cell Sci	WB, CoIP

## Storage

Storage:

Store at -20°C. Stable for one year after shipment.

Storage Buffer:

PBS with 0.02% sodium azide and 50% glycerol pH 7.3.

Aliquoting is unnecessary for -20°C storage

For technical support and original validation data for this product please contact:

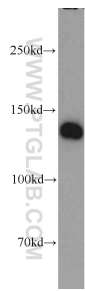
T: 4006900926

E: [Proteintech-CN@ptglab.com](mailto:Proteintech-CN@ptglab.com)

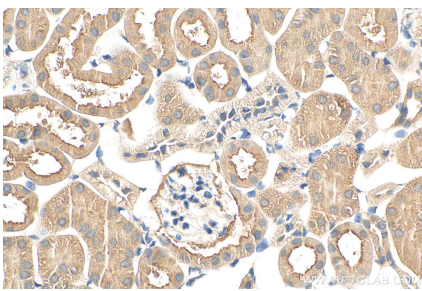
W: [ptgcn.com](http://ptgcn.com)

**This product is exclusively available under Proteintech Group brand and is not available to purchase from any other manufacturer.**

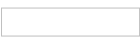
Selected Validation Data



HeLa cells were subjected to SDS PAGE followed by western blot with 22211-1-AP (ERC1 antibody) at dilution of 1:1000 incubated at room temperature for 1.5 hours.



Immunohistochemical analysis of paraffin-embedded mouse kidney tissue slide using 22211-1-AP (ERC1 antibody) at dilution of 1:200 (under 40x lens). Heat mediated antigen retrieval with Tris-EDTA buffer (pH 9.0).



Immunofluorescent analysis of (-20°C Methanol) fixed HUVEC cells using ERC1 antibody (22211-1-AP) at dilution of 1:400 and CoraLite®488-Conjugated AffiniPure Goat Anti-Rabbit IgG(H+L).