

For Research Use Only

Desmin Polyclonal antibody

Catalog Number: 22205-1-AP

1 Publications



Basic Information

Catalog Number:

22205-1-AP

Size:

300 ug/ml

Source:

Rabbit

Isotype:

IgG

Immunogen Catalog Number:

AG17525

GenBank Accession Number:

BC032116

GeneID (NCBI):

1674

UNIPROT ID:

P17661

Full Name:

desmin

Calculated MW:

470 aa, 54 kDa

Observed MW:

50-55 kDa

Purification Method:

Antigen affinity purification

Recommended Dilutions:

WB 1:500-1:1000

IHC 1:50-1:500

Applications

Tested Applications:

WB, IHC, ELISA

Cited Applications:

WB

Species Specificity:

human, mouse, rat

Cited Species:

human

Note-IHC: suggested antigen retrieval with TE buffer pH 9.0; (*) Alternatively, antigen retrieval may be performed with citrate buffer pH 6.0

Positive Controls:

WB : mouse heart tissue, mouse skeletal muscle tissue

IHC : human normal colon, human heart tissue, human skeletal muscle tissue, mouse heart tissue

Background Information

Desmin is the main intermediate filament protein in skeletal and cardiac muscle cells and is essential for both the structural integrity and the survival of muscle cells. As an abundant muscle-specific protein, desmin has been widely used as a marker of muscle derived tumors. Anti-desmin is also valuable in the differential diagnosis of tumors of uncertain origin.

Notable Publications

Author	Pubmed ID	Journal	Application
Hang Mei	38993555	Int J Biol Sci	WB

Storage

Storage:

Store at -20°C. Stable for one year after shipment.

Storage Buffer:

PBS with 0.02% sodium azide and 50% glycerol pH 7.3.

Aliquoting is unnecessary for -20°C storage

For technical support and original validation data for this product please contact:

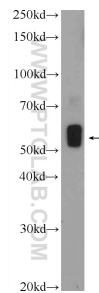
T: 4006900926

E: Proteintech-CN@ptglab.com

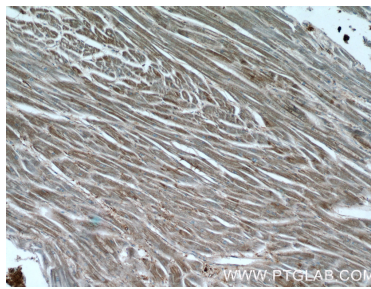
W: ptgcn.com

This product is exclusively available under Proteintech Group brand and is not available to purchase from any other manufacturer.

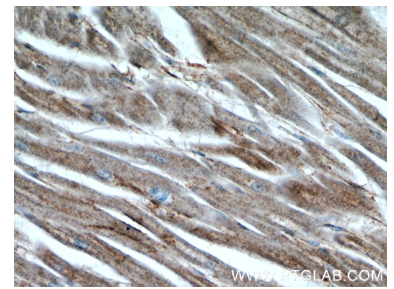
Selected Validation Data



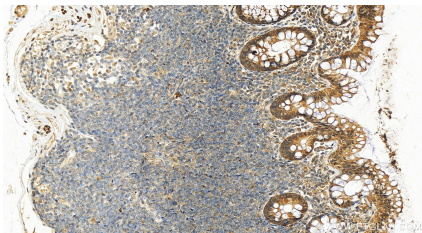
mouse heart tissue were subjected to SDS PAGE followed by western blot with 22205-1-AP (Desmin antibody at dilution of 1:600 incubated at room temperature for 1.5 hours.



Immunohistochemical analysis of paraffin-embedded human heart tissue slide using 22205-1-AP (Desmin antibody at dilution of 1:50 (under 10x lens).



Immunohistochemical analysis of paraffin-embedded human heart tissue slide using 22205-1-AP (Desmin antibody at dilution of 1:50 (under 40x lens).



Immunohistochemical analysis of paraffin-embedded human colon tissue slide using 22205-1-AP (Desmin antibody) at dilution of 1:200 (under 20x lens). Heat mediated antigen retrieval with Tris-EDTA buffer (pH 9.0).