

EXPH5 Polyclonal antibody

Catalog Number: 22199-1-AP

1 Publications

Basic Information

Catalog Number:

22199-1-AP

Size:

400 µg/ml

Source:

Rabbit

Isotype:

IgG

Immunogen Catalog Number:

AG17449

GenBank Accession Number:

BC113119

GeneID (NCBI):

23086

UNIPROT ID:

Q8NEV8

Full Name:

exophilin 5

Calculated MW:

1989 aa, 223 kDa

Observed MW:

222-240 kDa

Purification Method:

Antigen Affinity purified

Recommended Dilutions:

WB 1:200-1:1000

IHC 1:50-1:500

Applications

Tested Applications:

IHC, WB, ELISA

Species Specificity:

human

Positive Controls:

WB : A431 cells,

IHC : human liver tissue,

Note-IHC: suggested antigen retrieval with TE buffer pH 9.0; (*) Alternatively, antigen retrieval may be performed with citrate buffer pH 6.0

Background Information

EXPH5, also named as KIAA0624 or SLAC2B, is a 1989 amino acid protein, which contains one RabBD (Rab-binding) domain. EXPH5 is expressed in keratinocytes. EXPH5 may act as Rab effector protein and play a role in vesicle trafficking. EXPH5 plays a role in maintaining keratinocyte integrity, and in inherited skin fragility.

Notable Publications

Author	Pubmed ID	Journal	Application
Bryan K Sun	26545810	Genes Dev	

Storage

Storage:

Store at -20°C. Stable for one year after shipment.

Storage Buffer:

PBS with 0.02% sodium azide and 50% glycerol pH 7.3.

Aliquoting is unnecessary for -20°C storage

For technical support and original validation data for this product please contact:

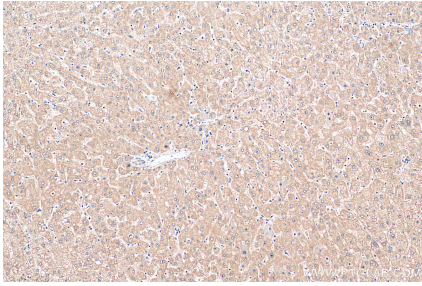
T: 4006900926

E: Proteintech-CN@ptglab.com

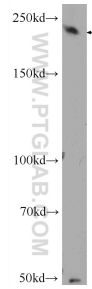
W: ptgcn.com

This product is exclusively available under Proteintech Group brand and is not available to purchase from any other manufacturer.

Selected Validation Data



Immunohistochemical analysis of paraffin-embedded human liver tissue slide using 22199-1-AP (EXPH5 antibody) at dilution of 1:200 (under 10x lens). Heat mediated antigen retrieval with Tris-EDTA buffer (pH 9.0).



A431 cells were subjected to SDS PAGE followed by western blot with 22199-1-AP (EXPH5 Antibody) at dilution of 1:300 incubated at room temperature for 1.5 hours.