

For Research Use Only

BMP3 Polyclonal antibody

Catalog Number: 22188-1-AP

2 Publications



Basic Information

Catalog Number:

22188-1-AP

Size:

600 µg/ml

Source:

Rabbit

Isotype:

IgG

Immunogen Catalog Number:

AG16750

GenBank Accession Number:

BC096269

GeneID (NCBI):

651

UNIPROT ID:

P12645

Full Name:

bone morphogenetic protein 3

Calculated MW:

472 aa, 53 kDa

Purification Method:

Antigen affinity purification

Recommended Dilutions:

WB 1:500-1:2000

IHC 1:50-1:500

Applications

Tested Applications:

IHC, WB, ELISA

Cited Applications:

WB

Species Specificity:

human

Cited Species:

human

Note-IHC: suggested antigen retrieval with TE buffer pH 9.0; (*) Alternatively, antigen retrieval may be performed with citrate buffer pH 6.0

Positive Controls:

WB : Recombinant protein,

IHC : human liver cancer tissue, human lung cancer tissue, human liver tissue

Background Information

BMP3 belongs to the transforming growth factor-beta (TGFB) superfamily. BMP3 plays an important role in embryonic development by inducing and patterning early skeletal formation. BMP3 has also been reported as a negative growth regulator in bone marrow progenitor cells through the inhibition of DNA synthesis and proliferation. Additionally, recent studies have revealed that BMP3 contributes to tumor development and progression.

Notable Publications

Author	Pubmed ID	Journal	Application
Yan Wei	25312381	Biol Trace Elem Res	WB
Emma R Dorris	39151293	Biochem Biophys Res Commun	WB

Storage

Storage:

Store at -20°C. Stable for one year after shipment.

Storage Buffer:

PBS with 0.02% sodium azide and 50% glycerol pH 7.3.

Aliquoting is unnecessary for -20°C storage

For technical support and original validation data for this product please contact:

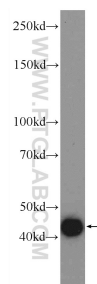
T: 4006900926

E: Proteintech-CN@ptglab.com

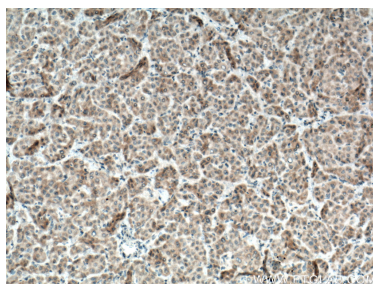
W: ptgcn.com

This product is exclusively available under Proteintech Group brand and is not available to purchase from any other manufacturer.

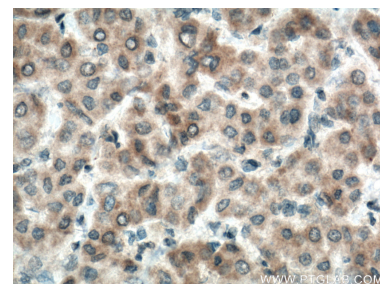
Selected Validation Data



Recombinant protein were subjected to SDS PAGE followed by western blot with 22188-1-AP (BMP3 Antibody) at dilution of 1:1000 incubated at room temperature for 1.5 hours.



Immunohistochemical analysis of paraffin-embedded human liver cancer tissue slide using 22188-1-AP (BMP3 antibody) at dilution of 1:200 (under 10x lens. Heat mediated antigen retrieval with Tris-EDTA buffer (pH 9.0).



Immunohistochemical analysis of paraffin-embedded human liver cancer tissue slide using 22188-1-AP (BMP3 antibody) at dilution of 1:200 (under 40x lens. Heat mediated antigen retrieval with Tris-EDTA buffer (pH 9.0).