

# GLP2R Polyclonal antibody

Catalog Number: 22187-1-AP

## Basic Information

**Catalog Number:**

22187-1-AP

**Size:**

800 µg/ml

**Source:**

Rabbit

**Isotype:**

IgG

**Immunogen Catalog Number:**

AG16745

**GenBank Accession Number:**

BC096262

**GeneID (NCBI):**

9340

**UNIPROT ID:**

O95838

**Full Name:**

glucagon-like peptide 2 receptor

**Calculated MW:**

553 aa, 63 kDa

**Observed MW:**

70 kDa

**Purification Method:**

Antigen affinity purification

**Recommended Dilutions:**

WB 1:500-1:1000

## Applications

**Tested Applications:**

WB, ELISA

**Species Specificity:**

human, mouse, rat

**Positive Controls:**

WB : mouse liver tissue, rat liver tissue

## Background Information

Glucagon-like peptide 2 receptor (GLP2R), a member of the G-protein-coupled receptor family, is closely related to the glucagon receptor and binds to glucagon-like peptide 2 (GLP2). GLP2 is a 33-amino-acid peptide hormone that exerts various actions in the gastrointestinal tract (PMID: 10828489).

## Storage

**Storage:**

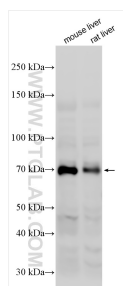
Store at -20°C. Stable for one year after shipment.

**Storage Buffer:**

PBS with 0.02% sodium azide and 50% glycerol pH 7.3.

Aliquoting is unnecessary for -20°C storage

## Selected Validation Data



Various lysates were subjected to SDS PAGE followed by western blot with 22187-1-AP (GLP2R antibody) at dilution of 1:800 incubated at room temperature for 1.5 hours.