

Paxillin Polyclonal antibody

Catalog Number: 22172-1-AP

6 Publications

Basic Information

Catalog Number:

22172-1-AP

Size:

600 µg/ml

Source:

Rabbit

Isotype:

IgG

Immunogen Catalog Number:

AG17702

GenBank Accession Number:

BC136787

GeneID (NCBI):

5829

UNIPROT ID:

P49023

Full Name:

paxillin

Calculated MW:

591 aa, 65 kDa

Purification Method:

Antigen affinity purification

Recommended Dilutions:

WB 1:200-1:1000

IHC 1:20-1:200

IF/ICC 1:20-1:200

Applications

Tested Applications:

IF, IHC, WB, ELISA

Cited Applications:

WB, IHC

Species Specificity:

human, Canine, mouse

Cited Species:

human

Note-IHC: suggested antigen retrieval with **TE buffer pH 9.0; (*) Alternatively, antigen retrieval may be performed with citrate buffer pH 6.0**

Positive Controls:

WB : RAW 264.7 cells,

IHC : human breast cancer tissue, human stomach cancer tissue

IF/ICC : MDCK cells,

Background Information

Notable Publications

Author	Pubmed ID	Journal	Application
ShanWang	34599264	Sci Rep	WB
Lai Jin	30849520	Cell Signal	WB
Lupeng Wang	31173185	Int J Oncol	WB

Storage

Storage:

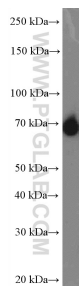
Store at -20°C. Stable for one year after shipment.

Storage Buffer:

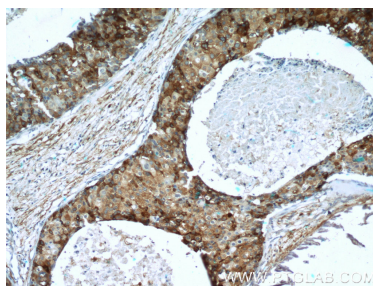
PBS with 0.02% sodium azide and 50% glycerol pH 7.3.

Aliquoting is unnecessary for -20°C storage

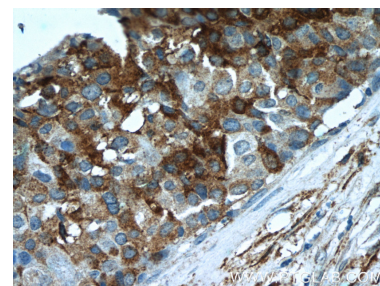
Selected Validation Data



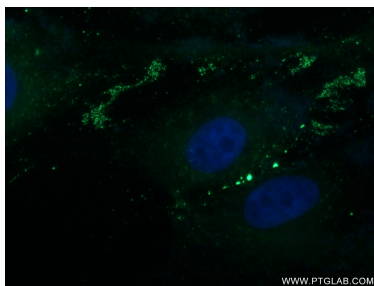
RAW 264.7 cells were subjected to SDS PAGE followed by western blot with 22172-1-AP (Paxillin antibody at dilution of 1:300 incubated at room temperature for 1.5 hours.



Immunohistochemical analysis of paraffin-embedded human breast cancer tissue slide using 22172-1-AP (Paxillin antibody at dilution of 1:50 (under 10x lens).



Immunohistochemical analysis of paraffin-embedded human breast cancer tissue slide using 22172-1-AP (Paxillin antibody at dilution of 1:50 (under 40x lens).



Immunofluorescent analysis of MDCK cells using 22172-1-AP (Paxillin antibody) at dilution of 1:50 and Alexa Fluor 488-conjugated AffiniPure Goat Anti-Rabbit IgG(H+L).