

For Research Use Only

# LPAR4 Polyclonal antibody

Catalog Number: 22165-1-AP

1 Publications



## Basic Information

Catalog Number:

22165-1-AP

Size:

600 µg/ml

Source:

Rabbit

Isotype:

IgG

Immunogen Catalog Number:

AG17817

GenBank Accession Number:

BC069996

GeneID (NCBI):

2846

UNIPROT ID:

Q99677

Full Name:

lysophosphatidic acid receptor 4

Calculated MW:

370 aa, 42 kDa

Observed MW:

42-50 kDa

Purification Method:

Antigen affinity purification

Recommended Dilutions:

WB 1:500-1:2000

IHC 1:20-1:200

IF/ICC 1:50-1:500

## Applications

Tested Applications:

WB, IHC, IF/ICC, ELISA

Cited Applications:

WB

Species Specificity:

human, mouse, rat

Cited Species:

human

**Note-IHC: suggested antigen retrieval with TE buffer pH 9.0; (\*) Alternatively, antigen retrieval may be performed with citrate buffer pH 6.0**

Positive Controls:

WB : SKOV-3 cells, mouse brain tissue, HL-60 cells, 3T3-L1 cells

IHC : human ovary tissue,

IF/ICC : SW 1990 cells,

## Background Information

### Notable Publications

Author	Pubmed ID	Journal	Application
Chengsheng Wu	36646789	Nat Cell Biol	WB

## Storage

Storage:

Store at -20°C. Stable for one year after shipment.

Storage Buffer:

PBS with 0.02% sodium azide and 50% glycerol pH 7.3.

Aliquoting is unnecessary for -20°C storage

For technical support and original validation data for this product please contact:

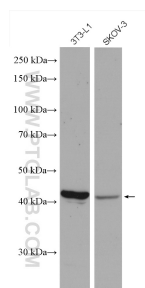
T: 4006900926

E: [Proteintech-CN@ptglab.com](mailto:Proteintech-CN@ptglab.com)

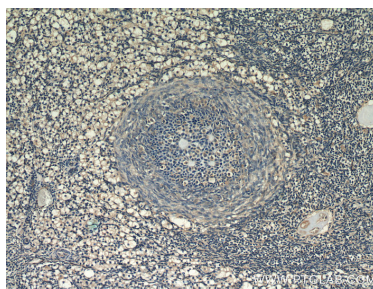
W: [ptgcn.com](http://ptgcn.com)

This product is exclusively available under Proteintech Group brand and is not available to purchase from any other manufacturer.

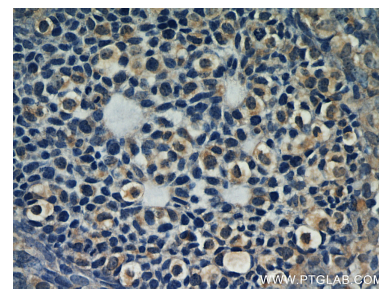
## Selected Validation Data



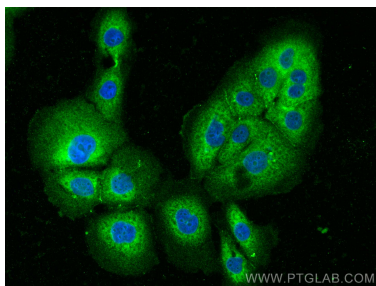
SKOV-3 cells were subjected to SDS PAGE followed by western blot with 22165-1-AP (LPAR4 antibody) at dilution of 1:1000 incubated at room temperature for 1.5 hours.



Immunohistochemical analysis of paraffin-embedded human ovary using 22165-1-AP (LPAR4 antibody) at dilution of 1:50 (under 10x lens).



Immunohistochemical analysis of paraffin-embedded human ovary using 22165-1-AP (LPAR4 antibody) at dilution of 1:50 (under 40x lens).



Immunofluorescent analysis of (-20°C Ethanol) fixed SW 1990 cells using LPAR4 antibody (22165-1-AP) at dilution of 1:200 and CoraLite®488-Conjugated AffiniPure Goat Anti-Rabbit IgG(H+L).