

For Research Use Only

LY6E Polyclonal antibody

Catalog Number: 22144-1-AP

Featured Product

4 Publications



Basic Information

Catalog Number:

22144-1-AP

Concentration:

450 ug/ml

Source:

Rabbit

Isotype:

IgG

Immunogen Catalog Number:

AG17573

GenBank Accession Number:

BC119708

GeneID (NCBI):

4061

UNIPROT ID:

Q16553

Full Name:

lymphocyte antigen 6 complex, locus E

Calculated MW:

131 aa, 14 kDa

Observed MW:

12-16 kDa

Purification Method:

Antigen affinity purification

Recommended Dilutions:

WB: 1:500-1:2000

Applications

Tested Applications:

WB, ELISA

Cited Applications:

WB, IHC, IF

Species Specificity:

human, mouse, rat

Cited Species:

human

Positive Controls:

WB: mouse kidney tissue, rat kidney tissue

Background Information

The predicted MW of LY6E is 13 kDa. Catalog#22144-1-AP recognises two band of 13 kDa and 18 kDa, and the additional 18 kDa band may be due to glycosylation.

Notable Publications

Author	Pubmed ID	Journal	Application
Dan Liu	36165190	Lab Chip	WB, IF
Xuesen Zhao	32641482	J Virol	WB
Qian Zhang	34994389	Carcinogenesis	WB, IHC

Storage

Storage:

Store at -20°C. Stable for one year after shipment.

Storage Buffer:

PBS with 0.02% sodium azide and 50% glycerol, pH7.3

Aliquoting is unnecessary for -20°C storage

For technical support and original validation data for this product please contact:

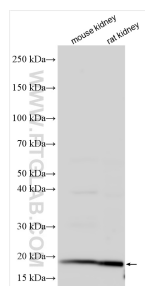
T: 4006900926

E: Proteintech-CN@ptglab.com

W: ptgcn.com

This product is exclusively available under Proteintech Group brand and is not available to purchase from any other manufacturer.

Selected Validation Data



Various lysates were subjected to SDS PAGE followed by western blot with 22144-1-AP (LY6E antibody) at dilution of 1:1000 incubated at room temperature for 1.5 hours.